

RURAL FRINGE

Journal of the Hall district



VOLUME 24 ISSUE 1

February 2017

Hops and Vine

Avid beer and wine aficionados and brothers-in-law Neville Betts and Shaun O'Connor wanted to not only increase their own knowledge but share with the Canberra community by creating a space for Canberra residents and visitors to shop for local wines, craft beers and selected produce.

An unassuming old building in the main street of the village of Hall, known as Kinlyside Hall has found fresh breath in its rebirth as the home of *Hops and Vine*.

The renovation/partial restoration was challenging and became a family affair, with family assisting with elements of the fit out along with local craftsmen providing custom carpentry and metal fabrication.

Thank you to all involved in the fit out and a special thanks to Brian O'Connor for all his assistance. All have been extremely hands on with the project from sourcing local products to finding materials to give the 116 year old heritage building its new lease on life.



It's been a labour of love, rebirthing a circa 1900 building. Our objective was to breath new life into a small piece of regional history that has had family connections from its construction to this very day. We are proud of what we have achieved. The old building has had many uses, from a wheelwright's shop, dance hall, picture theatre, antique shop to name a few.

We are hopeful that this new chapter in the Kinlyside Hall's life ensures its longevity and new interest for this building. This is surely something that you will all want to check out.

Hops and Vine, as the name suggests, is a unique craft beer and wine cellar along with interesting produce and accessories.



Wine tastings are a regular occurrence with dates and times identified on the *Hops and Vine* facebook page. *Hops and Vine* also cater for private functions.

Contact admin@hopsandvine.com.au for further information.

Usual opening hours are Thursday to Sunday from 11am till 7pm.

World Wetlands Open Day Jerrabomberra Wetlands

Sunday 5 February 2017
10am – 3pm



Australian Reed-warbler (*Acrocephalus australis*),
Jerrabomberra Wetlands
(Image by JJ Harrison - jjharrison89@facebook.com)

Jerrabomberra Wetlands are hosting an exciting and fun-filled open day to celebrate **World Wetlands Day 2017**. There will be a huge variety of stalls and activities for the whole family including ranger guided walks, children's activities, reptile displays, art exhibitions, Indigenous cultural activities, food and lots, lots more.

Entry is by gold coin donation with most activities free of charge. All proceeds go towards conservation efforts at Jerrabomberra Wetlands.

For further information contact:
Lori Gould on 0439 030 058 or email:
lori.gould@woodlandsandwetlands.org.au

(Read more about Wetlands on page 5)

THE
WANDERING
GOOSE
HALL, ACT
EST. 2016



Where food & conversation
go hand in hand, come in
and enjoy the atmosphere!

BREAKFAST, LUNCH
and the BEST COFFEE

Tuesday – Sunday 7am – 4pm
6230 9777

National Sheep Dog Trial Championships



All welcome, free entry during the week.
\$5/person or \$15/car on weekend.
Refreshments available on weekend.

Tuesday 14 March – Sunday 19 March
at the Hall Showground,
Gladstone Street, Hall
nationalsheepdogtrials.org



When you need water, choose

Southwell Water

FRESH CLEAN PURE DRINKING WATER
DELIVERED DIRECT TO YOUR TANKS

DUST SUPPRESSION
EVENT WATERING

POOL FILL AND TOP UP

LOCALLY SOURCED - LOCALLY OWNED

PH 04 7676 2020

SOUTHWELL WATER

SOUTHWELL WATER
YOUR LOCAL SUPPLIER
BUT WE COVER ALL AREAS



PART PROCEEDS FROM EVERY
DELIVERY GOES DIRECT TO THE
MCGRATH FOUNDATION

Hall School Museum & Heritage Centre

presents

Canberra Brass Band's

Annual Twilight Concert

Sunday 19 March, 5pm – 7pm

The Museum will
be open for a
short period
before the
concert

Hall School
Grounds

For further
information email:

hallmuseum@bigpond.com

Catch up in the Park

For those who would like to have a relaxed
couple of hours in the beautiful surrounds
of the Village Park!

On the first Sunday of the month, at 4pm
(excluding January) bring your afternoon
refreshments, picnic rug or chair to the Well
in the park at Gladstone Street and enjoy the
company of neighbours and friends. It is very
casual and relaxed – come for a few minutes or
stay as long as you like. Everyone very welcome.

Next Catch up: **5 February 2017**

enquiries:

Margaret Monahan 0419 251 512



Village of Hall and District Progress Association Committee Meeting

Wednesday 15 February,
7pm at the Cottage

This is a regular meeting of the committee
of the VHDP and all are very welcome.
Comments and suggestions can be sent to
any committee member or secretary
Brenton Philp - phone 0439 988 110 or
email brenton.philp@inet.net.au

St Michael & All Angels Anglican Church



With the joy of Christmas behind us,
we will soon move into the reflective
time of Lent, leading to Easter.

Ash Wednesday

1 March 2017 at 7.30pm

We will start the season of Lent with this
traditional service of Holy Communion at
St Michael's. All are welcome.

Good Friday

14 April at 11.00am

All the churches of Hall combine for a
Stations of the Cross walk through Hall.
The walk will start at the carpark at the intersection
of Barton Highway and Victoria Street at 11am, then
proceed along Victoria Street to the Remembrance
Garden on the corner of Victoria and Gladstone
Streets. Everyone is welcome to join in – for the
whole walk or at any point along the way.

There will also be a service of
Holy Communion at 9.00am at our parish church
St Barnabas, Charnwood.

Easter Day

16 April at 11.00am

Everyone is invited to a service of
Holy Communion at St Michael & All Angels
at our regular service time of 11.00am.

For more information please call 0408 488 526

BETTER BLADES

Sharpening Service

- Knives
- Scissors
- Electric hedge trimmers
- Clipper blades - steel/ceramic

Sales and service of Oster®, Thrive®, Wahl®, Andis® and Sheer Magic blades

contact: 0415 483 089 mobile drop off: 21 Gladstone Street, HALL
02 6230 2440 phone/fax email: bblades7@bigpond.com
post to: PO Box 250 HALL 2618

CSIRO Ginninderra Field Station development

The Progress Association is taking a keen interest in the proposed development of the CSIRO Ginninderra Field Station site. The committee has met a number of times with representatives from CSIRO and their project team to receive updates and to discuss issues of interest to the Hall community. Key issues discussed so far have included traffic, sustainability, planning of the area north of Kuringa Drive and water quality issues around Halls Creek.

We have appreciated the willingness of CSIRO to talk openly with us about the project and we will invite them back to provide regular updates. The land has now been rezoned as 'Urban' and CSIRO is in the process of seeking a development partner by around the middle of 2017.

If you want to know more about the project or want to contact CSIRO directly to ask questions, visit the project website at ginninderraproject.com.au/



Would you like to see an Action bus service to Hall?

Contact has been made with Transport Canberra in relation to obtaining a regular public transport link to Hall and the initial response has been most positive. Below are some points we have been requested to provide some input on for Transport Canberra's consideration for a service to our area.

- What are the demographics that are driving demand - is it the older, non work related population or the journey to work?
- What is the estimated demand for a bus service in Hall? What is the primary need we are seeking to cater for?
- Where do the residents of Hall want to travel to? For example, which is the most important connection, Belconnen or Gungahlin?
- Are there particular days of the week/weekend that the area would benefit most from a bus service?
- Is there a particular time of day that services would provide the best outcomes? For example, for peak travel or during the day, or both?
- What other transport options could be considered – shuttle, community bus, other providers?

Please provide any responses or further comments to info@hall.act.au, via the Fringe contact details, or flag down a member of the committee – along with any other ideas or suggestions you may have for life in our village and/or district.

Wetlands *continued from page 2*

Wetlands function as a kind of environmental kidney and by helping to clean and control waterflows they are critical to the health of other ecosystems and of vital importance to wildlife and humans everywhere.

Wetlands help to mitigate flooding by holding water much like a sponge. This helps to keep river levels normal and acts to filter and purify the surface water. When water levels are low, wetlands slowly release water – helping to maintain a healthy environment and to counterbalance human impacts on rivers by rejuvenating them and the surrounding ecosystems.

Wetlands also release vegetative matter into rivers, helping to feed fish, amphibians, insects and birds. Many animals that live in other habitats use wetlands for migration or reproduction. For example, herons nest in large, old trees, but need shallow areas in order to wade for fish and aquatic life. Amphibians often forage in upland areas but return to the water to mate and reproduce.



BROADBAND FOR SENIORS
STAYING CONNECTED

Free computer training for seniors



Broadband for Seniors helps senior Australians get the skills they need to use computers and access the Internet.

BFS kiosks are located all around Australia. They are available to anyone 50 years or over who wants to learn how to use a computer and surf the Internet for free.

Training can include how to use a personal computer (PC), a laptop, an android tablet (Samsung), iPad or smartphone. Learn how to send an email, attach photos and how to surf the internet. All training is on a 1:1 basis.

The Hall Kiosk is situated at the Hall school site, for further information and how to book a tutor contact **Rod Roberts** on **6230 2436**.

Broadband for Seniors is a Government funded initiative.

FERTSPREAD
FERTILISER SALES, SERVICES & SPREADING CONTRACTORS

Call today to find out about our **LIME Specials**

- Urea • Super • Dolomite
- Lime • Agri-Ash • Compost

1800 500 184
paul@fertspread.com
www.fertspread.com

Sales | Delivery | Spreading | Soil Testing | Job Logistics

FRESH WATER DELIVERIES

18,000 Litre Tanker

Servicing the district for over 20 years

Also available - maintenance grading of driveways, dam construction & house site cuts

PH: Geoff - 0417 632 209

HEWATT CIVIL PTY LTD
e: info@hewatt.com.au

DARRALEE QUARRY

Darralee Quarry has recently been re-opened. It was one of the RTA's main sources of road base for many years.

Supply and/or delivery of Road Base to suit gravel roads

Contact Paul on (02) 4845 8288 or paulwyer@fertspread.com

BEAUTIFUL GARDENS
by **DOG TRAP DESIGN**
garden design consultant & horticulturist

LISA WALMSLEY

email: lisa@dogtrapdesign.com.au
web: www.dogtrapdesign.com.au **0428 275 701**

CANBERRA ARWAYS PTY LTD

FOR RELIABLE & EFFICIENT MOTOR VEHICLE TRANSPORT

CANBERRA – SYDNEY
CANBERRA – MELBOURNE

ALSO PICK-UP & DELIVERY ALL OTHER CAPITAL CITIES

For enquiries telephone **6242 7310** FACSIMILE 6242 7320
3 CHENEY PL, MITCHELL

Brindabella Hills Vineyard Cafe

Visit our new cafe on the terrace at our cellar door.

Relaxed and tasty lunches with a glass of wine every weekend. Check out the menus on our website: www.brindabellahills.com.au

Taste our very popular wines and enjoy lovely views over the vineyard and into the valley and Murrumbidgee River.

Bookings for lunch, phone **61619154** or email cafe@brindabellahills.com.au

To find us, take the Wallaroo Road, turn left at Southwell Road, then right at Brooklands Road then left into Woodgrove Close. We are at the end of Woodgrove Close.

Farmer Brown's Free Range Eggs by Farmer Greg

As your local free range egg producer I thought I would provide an update on my progress and the many challenges I've faced in the past six months.

Winter

The amount of rain over winter and spring made things very difficult. It was so wet I was unable to effectively get into the property for a couple of months. I resorted to often parking on the highway and lugging feed in over the fence and then carrying eggs out! The weather also extremely limited my pasture rotation of the hens, meaning they were in the same area for much longer than usual. When it dried out enough to look possible to move the vans it took around six hours for myself and my brothers to move both vans less than 100 metres! Overall tasks in the wet were taking three times longer than usual. However, my view on this difficult period is that if we could make it through one of the wettest winters on record, with the least infrastructure and equipment I will ever have then we can make it through anything.

Spring

Things in spring dried out a bit, but any lower lying areas were still under about an inch of water, and the drainage lines crossing the property were saturated.

In late September we had Greening Australia provide 600 native trees and shrubs to create a biodiversity corridor. Greening Australia and ANU volunteers along with my extended family greatly assisted in planting these. Six hundred more plants are due to be planted in this coming Autumn (it was too wet to plant them in the lower lying areas!).



The biodiversity corridor aims to join up the Box Gum grassy woodland of the Hall cemetery with other remaining nearby stands, to help promote natural regrowth of these endangered native landscapes.

Summer

After many delays I have finally had a silo installed, and a shed is soon to follow. This along with a tractor should reduce the amount of manual labour to be performed.

I have just completed building my third Chicken Caravan. It will soon be home to more hens in early February. This will take my total number of hens to around 1500, still under 75 hens per hectare and a far

cry from the 10 000 hens per hectare deemed 'free range' in the supermarkets.



With more hens arriving and infrastructure still being put in place I am looking for a casual helper to assist with tasks and look after the hens down the paddock. This position may expand into part-time or full time in the coming months. If you think you may be interested give me a call to discuss.

We are now arguably producing the best quality eggs in the Canberra region. Encouragingly we have a waiting list to supply commercial businesses in Canberra. So if you haven't tried them yet, I suggest you do.

Future plans include having a road built to ensure access into the property even when very wet, and installing water tanks and irrigation.

Once again, thanks to all the support from many Hall district residents and businesses.

Gibley GARDENING

For all your gardening needs

Mowing - small & large scale
Trimming/Hedging/Pruning including roses, fruit trees

Mulching • Weeding • Fertilising
Soil improvement • Planting
Green waste removal

QUALIFIED HORTICULTURIST

Phone: **0417 682 540** (Charlie)
0428 275 701 (Lisa)

Email: lisa@gibleygardening.com.au

www.gibleygardening.com.au

Message to Wallaroo residents

For some time a group of 'Presidents of Community Associations in the Yass Valley Shire' has been meeting on a regular basis with David Rowe (General Manager) and Chris Berry (Director of Planning) to discuss issues that affect the residents in their areas. They have included Presidents of Wee Jasper, Sutton, Gundaroo, Bowning, Murrumbateman, Mount Spring and Geary's Gap Residents' Associations. As residents of the Wallaroo Area we seem to be conspicuous by our absence.

The question is, do we wish to form a Community Association and elect a President to represent us at these meetings?

Could you please voice your opinions at allwood3@hotmail.com by the end of February. If there is enough support I guess we will need to call a meeting and take it from there.

Judy Roberts

FARMER BROWN'S
FREE RANGE EGGS

Using modern sustainable and humane farming techniques incorporating innovative ideas, such as pasture rotation and recycling of waste food, to create a more sustainable city.
Produced on a 20 hectare property in the Hall region.

Available at 'Daughters at Hall'
or direct - drop in to 2 Alexandra St in the Village,
or call Greg, 0402 840 834

www.farmerbrownseggs.com

Ray White

YOUR HOME DESERVES ELITE SERVICE

Your Local Hall Region Expert

Mark Johnstone has been named as an Alan White Elite Performer, recognised in the top two per cent across the Ray White Group in Australia and New Zealand.

Dedicated and committed to assisting his customers, Mark is continually acknowledged for his integrity, trustworthiness and ability to deliver great results. Call Mark anytime to discuss your real estate needs!

Mark Johnstone 0414 382 093
mark.johnstone@raywhite.com

Ray White Belconnen 02 6173 6300
raywhitebelconnen.com.au

Yass Valley Council's Delivery Program and Operational Plan

Yass Valley Council is currently putting together a 'Road Show' to showcase the draft 2017/18 – 2021/22 Yass Valley Council Delivery Program and draft 2017/18 Operational Plan. A Delivery Program is what your elected councillors hope to achieve during their four year term on Council. An Operational Plan is the detailed actions/projects, budget, rates, fees and charges for the upcoming financial year.

The aim of the Road Show is for the community to understand what has been included in the Delivery Program and Operational Plan and for the community to provide feedback or suggested projects when the documents go on exhibition later this year for public comment.

Residents of the Wallaroo/Spring Range area have arranged for this 'Road Show' to take place at the Wallaroo Fire Shed on Tuesday 14 March at 7.00pm.

If you have any further questions please do not hesitate to contact Media and Communications Officer:

Gill.Elphinston@yass.nsw.gov.au

or Director Finance and Corporate:

Sharon.Hutch@yass.nsw.gov.au

yass valley council
the country the people

GETTING READY FOR A BUSH FIRE IS EASIER THAN YOU THINK

THE 4 SIMPLE STEPS ARE:

1. **DISCUSS**

2. **PREPARE**

3. **KNOW**

4. **KEEP**

NSW RURAL FIRE SERVICE www.MyFirePlan.com.au

NSW RURAL FIRE SERVICE

KEY MESSAGES



Grass fires

- > There is an increased risk of grass fires this season
- > Grass fires can move three times as fast as a bush fire
- > Fires on farms can destroy homes, crops and livelihoods
- > There are simple things you can do to prepare for a grass fire:
 - > Keep grass short – you can mow it, graze it or slash it back
 - > Maintain your machinery
 - > Know where you can move your animals to safety
 - > Check and maintain firefighting equipment like pumps and hoses
 - > Make sure a fire truck can access your property – think about gates or obstructions
 - > If you're using fire on your property, you may require a permit. Get to know your local NSW RFS Brigade or the team at your local Fire Control Centre for further information.
- > When travelling, get the [Fires Near Me app](#), go to the [NSW RFS website](#) and follow us on social media to stay up-to-date.
- > For information on grass fires go to www.rfs.nsw.gov.au/grassfires



Bush fire planning

- > There are simple things you can do to protect yourself and your family this bush fire season.
 1. Discuss with your family what you will do if a fire happens near you.
 2. Prepare your home and get it ready for bush fire season.
 3. Know the bush fire alert levels.
 4. Keep information like websites and emergency details handy.
 - > Get the easy guide to making your bush fire survival plan at www.myfireplan.com.au
- (NOTE: We don't say 'download your plan' or 'get your plan' – instead, we encourage people to make their plan)



Preparing your home

- > Getting ready for a bush fire may be easier than you think.
- > The top five things to do:
 1. **TRIM** overhanging branches.
 2. **MOW** your grass and have a cleared area around your home.
 3. **REMOVE** materials that can burn around your home.
 4. **CLEAR** and remove leaves and debris from your gutters and around your home.
 5. **PREPARE** a sturdy hose that reaches all around your home.



Website messaging

- > PREPARATION INFORMATION www.myfireplan.com.au
- > EMERGENCY OR INCIDENT INFORMATION www.rfs.nsw.gov.au

Springfield Rural Fire Brigade

Do you have a fire plan?

www.rfs.nsw.gov.au/plan-and-prepare

As the Sutton and Tarago fires have clearly highlighted, grassfires pose a real risk to lives and property. Over 3300 hectares burnt in the Tarago fire and with the hot and windy weather firefighters worked long and hard, over a number of days, to contain the blaze. The Sutton fire saw over 500 hectares burn and had the wind change been as predicted, it is highly likely the fire would have threatened Hall and the district.

Grass fires can move three times as fast as a bush fire and hot temperatures and strong winds mean an increased risk of fires.

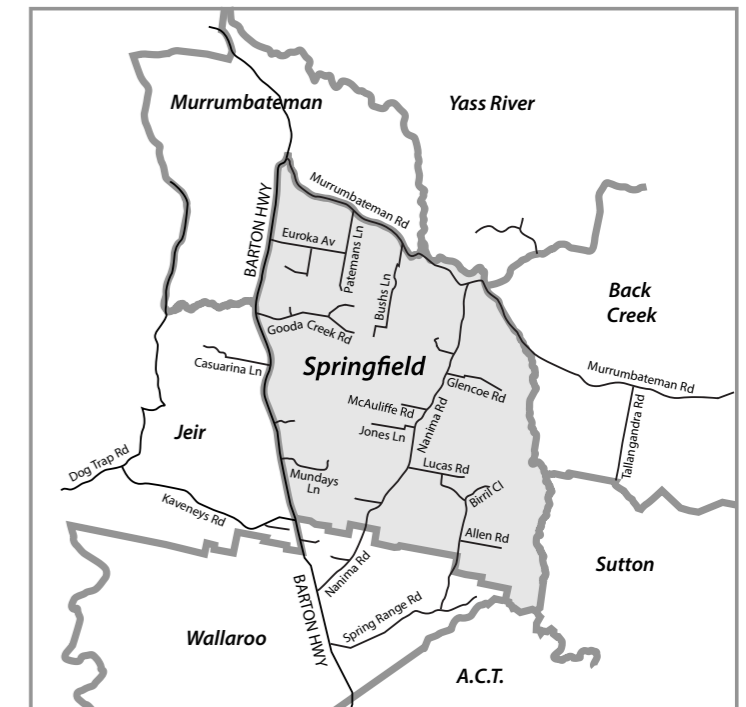
Be aware – the NSW Rural Fire Service is advising there is an increased risk of grass fires this season.

There are simple things you can do to prepare for a grass fire:

- Keep grass short – you can mow it, graze it or slash it back.
- Maintain your machinery.
- Know where you can move your animals to safety.
- Check and maintain firefighting equipment like pumps and hoses.

Rebecca Morrison President

- Make sure a fire truck can access your property – think about gates or obstructions.
- Join your local brigade and get to know your neighbours – they are the people helping to keep your area safe.



Remember if there is a major fire threat, the Rural Fire Service *cannot* deploy trucks to every house to protect them.

There are only five fire trucks in the Springfield Brigade and neighbouring brigades have about the same number. With approximately 500 homes in the Springfield Brigade, that is one truck to every 100 homes.

Help us to help you keep safe!



Contact: **0407 943 813**
email: tomandbecmorrison@hotmail.com

IT ONLY TAKES 3 MINUTES FOR A FIRE TO TAKE HOLD.

IF YOU SEE AN UNATTENDED FIRE CALL 000 WITHOUT DELAY.

Grassfed Galloway Beef

Available at Epic Markets

Minto Galloways *Natural, pasture raised beef.*

Independent US and Canadian tests found that Galloway Beef is:

- naturally lean, but well marbled, tender and full of flavour
- low in saturated fat, but with high levels of Omega-3
- contains no growth hormones or antibiotics, unlike most feed lot beef available through retail outlets today.

Gently reared on pasture, stress free Minto Galloway beef tastes great as well as being good for you.

NSW Food Authority Ref No. 33313 for your confidence
ACT Food Business number 0931/07

We sell Commercial and stud Galloway animals

To order, or for more information, contact
Greg & Chris Stuart
phone: 6230 2536 email: fenris1@bigpond.com

Hall Rugby

On behalf of the Hall Rugby Club Committee, our players and coaching staff, I'd like to take this opportunity to thank the Hall community for your support in 2016. You helped make our 25th anniversary year a memorable year.

On the field, while we didn't win the premierships the players and coaching staff still had a very successful year, winning the ACTRU Monaro 1st Division Club Championship with our 1st grade side finishing 2nd on the ladder and making it through to the preliminary finals, our 2nd grade side finishing 7th.

2017 will see the same competition structure as 2016 and it will again have Monaro 1st Division (1st and 2nd grade) and Premier Division 3rd and 4th grade combine and play a 17 round competition starting on 25 March and concluding on 29 July before a three week final series starting on 5 August and finishing with the Grand Final on 19 August. This competition structure will tie in with the Premier Division 1st, 2nd and Colts Competition. Please check the Hall Community web site for the dates of our home games.

As the premier sporting club of the Hall District, we are proud of our contribution to the life of Hall Village. The club remains a member of the Hall Progress Association, along with the Hall Collectors Club and the Hall and District Axemen's Club, and we've built up a great relationship with the Rotary Club of Hall.



Lincoln Partners work with small to medium sized businesses and individuals to minimise tax, reduce risk and maximise their growth potential.

Lincoln Partners specialise in:

- Business and financial structuring
- Taxation compliance and advice
- Cashflow analysis and budgeting
- Business sales and purchases
- Financial strategies and analysis

principal: **John Howlett**

phone: **02 6100 4732**
 fax: **02 6230 9474**
 mobile: **0411 283746**

email: **john@lpcanberra.com.au**

postal address: **PO Box 282, GUNGAHLIN, ACT 2912**
 street address: **3/10 Victoria Street, HALL, ACT 2618**



Nigel Page President



We are very appreciative of the Hall businesses that show their support, such as the *Daughters at Hall, Territory Energy, The Shearing Shed, Lincoln Partners, Sign Up Australia, Pacific Facilities Maintenance* and, of course, *the Wood Duck Inn*.

Below is a list of sponsorship opportunities designed for Hall community businesses wishing to sponsor the Bushrangers, we are also open to discuss tailoring a package for your business.

HALL BRONZE SPONSORSHIP

- Logo (or business name) on shared Sign Board to be displayed at all Hall home games throughout 2017
- Your logo on our website advertising your business
- Recognition on our Facebook page and group.
- Cost \$150 yearly

Pacific FM specialises in commercial building maintenance

Offering a suite of tailored specialised servicing including:
 Air conditioning, Electrical, Mechanical, Data, Fire and Emergency Essential Services installation, Maintenance and rapid breakdown response.

mob: 0417 678 405 | ph: 62624673
 email: justinh@pacificfm.com.au
 Unit 3, 125 Lysaght St, Mitchell ACT 2911
 PO Box 891, Mitchell ACT 2911
 www.pacificfm.com.au

HALL SILVER SPONSORSHIP

- Logo (or business name) on shared Sign Board to be displayed at all Hall home games throughout 2017
- Logo (or business name) on Sponsors Board to be displayed in the *Wood Duck Inn*
- Your logo on our website advertising your business
- Recognition of your business on our Facebook page and group and two 'marketing messages' advertising a special offer, discount or opportunity for our members and supporters.
- Cost \$250 yearly

Hall Veterinary Surgery

PROUDLY SERVING THE COMMUNITY OF HALL VILLAGE AND DISTRICT

www.hallvet.com.au

6230 2223

corner **Victoria & Hoskins** Streets
 Hall Village

THE SHEARING SHED HAIR SALON

Monday to Wednesday	9.00 – 5.30
Thursday	9.00 – 8.00
Friday	9.00 – 5.30
Saturday	8.00 – 1.00

Waxing and Tinting

Thursday	4.00 – 8.00
Saturday	8.00 – 1.00

Unit 1/2-4
 Victoria Street
 Hall ACT 2618
6230 2284

HALL GOLD SPONSORSHIP

- Logo (or business name) on shared Sign Board to be displayed at all Hall home games throughout 2017
- Logo (or Business name) on Sponsors Board to be displayed in the *Wood Duck Inn*
- Your logo on our website advertising your business
- Recognition of your business on our Facebook page and group and five 'marketing messages' advertising a special offer, discount or opportunity for our members and supporters.
- Personal player sponsorship of a Hall Rugby player which covers the player's registration fees
- Logo (or business name) along with sponsored player's photo to be displayed on the Hall Rugby web site
- Invitation to club sponsors day
- Cost \$600 yearly

To discuss these sponsorship opportunities or any other option you think may suit your business, please do not hesitate to contact:

Nigel Page - President, Hall Rugby Union

mobile: **0414 712 980**

email: **the.hall.bushrangers@gmail.com**

TERRITORY ENERGY
 ELECTRICAL DIVISION

Your Local Electrician

- Available 24 hours/seven days a week for electrical emergency repairs
- Licensed/insured professionals
- Residential/rural/commercial and industrial
- Split system Air-conditioning supply and install
- Level 2 Accredited Service Providers – metering, overhead and underground connections
- Energy efficiency advice
- Friendly customer service
- Will compete with any other written quotation the 2618 area

ABN 17 103 874 620
 Licence 153006C (NSW) 200313230 (ACT) ASP AP30672 (NSW)
 Accredited Master Electrician 803

0427 363 747 or 0428 288 466

Landcare ACT

Karissa Preuss

Ginninderra Catchment Group Coordinator



Want to learn more about managing your land? Interested in training about sustainable agriculture?

Landcare ACT (LACT) is a new non-profit peak body for landcare in the ACT. It is a company whose membership consists of the three ACT Catchment Groups, the Rural Landholder Association and the Buru-Ngunnawal Aboriginal Corporation. In 2017 LACT will be providing training for our region's rural land holders and managers in sustainable agriculture to build understanding and capacity.

To ensure that the training is relevant and meets the needs of landholders, LACT is carrying out a survey. The survey is anonymous with results not linked to any individual or property. The more survey responses LandcareACT gets, the better the program can be tailored to people's real needs. So it would be good to get as many responses as possible. at: www.surveymonkey.com/r/QQYWXJC or via the LACT website: www.LandcareACT.org.au

For further information or if you have any queries you can contact Landcare ACT at: admin@landcareACT.org.au

What has Landcare ACT been up to in 2016?

Landcare ACT's members (the Molonglo, Ginninderra and Southern ACT Catchment groups, ACT Rural Landholders' Association and the Buru-Ngunnawal Aboriginal Corporation) had certainly been busy last year, as you might all be aware, working to support you in your tireless and dedicated work.

Landcare ACT has also been busy, working to support you all, although you may not necessarily be quite so aware of that work – LACT's limited resources have been put to use with a focus on doing rather than promoting – something to work on next year!

In the early part of the year we consulted our members (and through them, you) to identify key issues for Landcarers in our region. This is summarised in *Strengthening Community Landcare* for healthy ACT landscapes.

Since then we have focussed (especially in an ACT election year) on drawing attention to the value and importance of the work that you do to look after the places you care about.

We did this with all political persuasions before the election, have continued that dialogue after the election and will take it forward into 2017. This has also included writing to all Members of the Legislative Assembly about the importance of continuing support for community Landcare and recognising the important role of the catchment groups in supporting the community.

We have also been part of national efforts, as part of the National Landcare Network, to promote community Landcare and ensure ongoing Australian Government commitment to Landcare, as the National Landcare Program comes to an end in mid 2018.

We would like to thank the whole Landcare community in the ACT and recognise the wonderful work that you all do in looking after the ACT.



A joint meeting of Landcare ACT's Board and Members Council (L to R) Jonathan Miller, Jim Adams, Glenys Patulny, Peter Gullet, Karen Williams, Martine Franco, Catherine Keirnan, Miranda Gardner, Karissa Preuss, Wally Bell. (Absent: Sandy Lolicato, Jann White, Megan Dixon, Lynton Bond)



*A unique
BED &
BREAKFAST
Experience*

*Our vintage carriages have come to rest
in picturesque and peaceful surroundings,
and so can you . . .*

(02) 6230 2280



Local, licensed

**BUILDER
CARPENTER**

30 years experience

Tim

0407 269 651

6230 2619 business hours



clearview
total property services

- Maintenance
- Roofing
- Gardening
- Carpentry/Joinery, Tiling, Painting, Plastering
- Kitchens, Bathrooms, Wardrobes & Laundries

Property Image Consultant

Stuart Hensley
mobile 0418 449 781 email clearview132@bigpond.com



**Hall
Natural
Therapies**

*Regain your health
and vitality*

Sick of feeling tired?
Hormones wreaking havoc?
Ongoing stress, skin or digestive problems?
Can't lose weight no matter what you try?
All your tests come back normal
but you still don't feel right?

Call Naturopath Anita Kilby
6230 9680 or 0411 494 680
or visit 2/10 Victoria St, Hall
hallnaturaltherapies.com.au
Confidentiality guaranteed

An option you should consider

**W.J. Gibbs & Co
Pty Ltd**

Sell your cattle at Canberra Oaks Estate Saleyards

"Weigh it up"
We pre-weigh all the cattle - the best option for vendors and purchasers.


"Compare our fees"
You definitely will find savings in yard dues, handling fees and commissions compared to most major operators.

"What does it cost in transport to get to major centres? Does it really add up?"
Double handling in many cases for smaller numbers
Time off feed and water = weight loss
Longer time on trucks = stress
All this costs you money
You could have your cattle to us and on water within the hour.

We make it our business to get you the best buying support for your livestock by keeping in touch with market trends.

We have regular coastal and local butcher support for young cattle and we are one of the closest markets to a significant cow and bull processing works.

Regular attendees to our auctions are local re-stockers and feedlot buyers.



Greg Darmody 0412 677 641
Jacob Rayner 0412 637 249
David Reid 0429 383 500
Office 02 6299 2255
52 Monaro St Queanbeyan
NSW 2620




CAPITAL WINES CELLAR DOOR
opening soon at Hall Village Court

Makers of the acclaimed "Ministry Series" – which makes an irreverent commentary on our location near the political hub of Canberra

We look forward to meeting you and introducing you to our great wines

Open 10:30am – 5pm, Thursday – Sunday and public holidays

5 Star James Halliday Winery

Bushfire safety

equine

by **Cassie Duddy** Canberra Equine Hospital

In the event of a bushfire, it is very important as a horse owner to have pre-planned actions and proper information to make rapid decisions that may save your horses and also your own life. It is your choice to relocate or stay, but remember you are responsible for developing your own plan and putting it in place. Once you have a plan, let friends, family and especially neighbours know, this allows sharing of information and resources. Below are some ideas to get you thinking, planning and acting. For more information on preparing your property, house and yourself, please see the ACT Rural Fire Service website www.esa.act.gov.au and the NSW Rural Fire Service website www.rfs.nsw.gov.au.



Bushfire plan
Relocate horses early if you plan to do so, don't wait until the fires are close. Keep in mind horses are flight animals and need the ability to run and jump in a catastrophic event.

Assess your risks

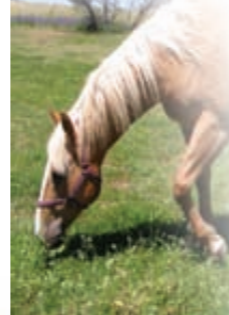
What are your major vulnerabilities? Secluded properties, dirt roads, bush and scrub, limited water supply. What can you do to minimise the damage? Clear dry/dead scrub, empty roof gutters, invest in water pumps or generators. What plans do you have in place for relocation, transport and alternative accommodation for your horse(s)? Who do you need to contact and are the details at hand?

Develop a buddy system

Talk with a neighbour or friend and make arrangements to check on each other after a disaster. Tell one another if you are evacuating and to where, so authorities will know. Buddies may agree to pool resources, such as generators, water tanks, horse floats, etc. Permanently identify each horse by tattoo, microchip, brand, tag, photographs (front, rear, left and right side) and/or drawing.

Looking for a great horse vet?

- We just love horses
- We travel to you
- Around the clock care
- 'State of the art' hospital
- From the routine to the complex diagnosis and surgery - we do the lot



CANBERRA Equine HOSPITAL
6241 8888

Corner of Barton and Federal highways, Lyneham

web: canberraequinehospital.com.au

email: equine@canberravet.com.au

Are you following us on Facebook?
Stay tuned for a
Bushfire Safety Seminar.

Have you seen our welcome video on the web page?
Go to www.canberraequinehospital.com.au to view it!



[Meadow Cottage]
Noyes Ln,

108 enquiries with
78 individual
parties inspecting.

SOLD
prior to Auction.

Ray White

I believe that no other real estate agency in our region will work as hard as we do to achieve the best result for your residential, commercial or rural property. Our team looks forward to working with you, as your chosen agency to obtain the best result for your property. - George Southwell

Independently owned, yet backed by Australia's largest Real Estate company. With us you deal with the business owners, not just a sales person.

Simon Southwell 0429 838 345
George Southwell 0427 755 997

Ray White Rural Canberra/Yass
5 Victoria Street, Hall, ACT
02 6230 2202

Museum Musings

museum

Phil Robson

Honorary Curator



The Hall Museum team is back on deck ready for another action packed year. Apart from the on-going management of the buildings and the displays, plans are already underway for the Annual Twilight Concert on Sunday 19 March, the special exhibitions and activities for the 2017 Canberra & Region Heritage Festival in April and getting ready for the many group visits that will be happening throughout the year.

National Trust Association

The museum has had discussions with the ACT Branch of the National Trust and an arrangement is to be put in place whereby the Trust's tax free charity status can be utilized by the Hall Museum. When finalised, it will mean that financial donations that people would like to make to the museum can be channelled through the National Trust and will attract the appropriate tax concessions.

Gillespie Collection

Over the Christmas-New Year break Neil Gillespie made a special visit to the museum to see how it was progressing with his father Lyall's large collection. He was greatly impressed by the work done on the Indigenous Collection so far and the layout of the room housing the collection. Some members of the museum team took the opportunity to ask specific questions on the collection and the research material and photographs.



Neil Gillespie standing in front of a portion of his father Lyall's extensive indigenous collection

Twilight Concert 2017

Elsewhere in this edition of the *Rural Fringe* is a notice about the Hall Museum's Annual Twilight Concert to be held on 19 March in the school grounds. Arrangements with the band are underway as to the musical theme

for the afternoon and the availability of a soloist. More information will be forthcoming in the next few weeks.

Canberra & Region Heritage Festival 2017

The Hall Museum & Heritage Centre will again be a part of the Canberra & Region Heritage Festival 2017. The theme for the festival this year is *Questions and Change*. We are planning an open weekend on 29-30 April 2017 with two exhibitions. One display will feature the Gillespie Indigenous Collection of stones and tools with explanations of their uses and significance. This will be called *Stones that Speak*. Also an exhibition of early history of the area featuring post European occupation entitled *Old Days & Old Ways*. To add to the exhibitions there will be other activities including an antique and collectable appraisal stall, displays of old vehicles, refreshments etc. Further details to come.

School site

Over the last couple of months the ACT Government has engaged contractors to carry out electrical, plumbing, structural, hazardous material and general condition inspections of all of the buildings on the site. This is to provide a full condition audit of the property and lead to some major maintenance works being carried out. Meanwhile the old electrical switchboard that serviced the museum buildings and the pre-school has been replaced with modern technology. The leaking roof on the cottage is scheduled to be replaced and repairs to the ceiling will follow.

Volunteers

The museum is looking for recruits to join the dedicated band of active volunteers who come along each Thursday morning to work on the collection. You will be trained in all the aspects of the museum's activities including being volunteer guide, researching so you will get to know the local history plus many other interesting tasks and also enjoy the pleasant social interaction with a wonderful group. If you would like to join us please contact me at hallmuseum@bigpond.com or phone **0408 259 946**.



- creating delicious stories -

Poachers Pantry
Smokehouse Restaurant

Situated between Hall and Murrumbateman.
Traditional smoked meat, seasonal flavours and cool climate wine.

Smokehouse Restaurant Brunch: Sat & Sun, 9:30-11:30am
Lunch: Fri-Sun, 12 to 3pm

Cellar door and Farm Shop 7 days, 9:30am to 5pm
02 6230 2487 poacherspantry.com.au


Hall Village Motors

phone: **6230 2288**

Mon-Fri
7:30am-5:30pm

Saturday
8:00am-2:00pm

Proprietors: Tony & Amy Hazelton
fax: 6241 7281



Your LOCAL servo!

What to do around the garden when it's too hot to garden

by **Lisa Walmsley**

It's really hard to be motivated to work in the garden at this time of year, it's so hot, the flies are unrelenting and the jobs are rather dull, weeding and watering. Don't be put off, there are so many other things you can be doing for the benefit of your garden.

Early mornings are a delight at this time of the year, we even have had a few fogs to take that sticky heat out of the mornings. Snail squashing is great at this time of the day. Those more vigilant folk have probably spread snail bait, but I have a new puppy and even though you can buy dog friendly snail bait, I am trying to avoid anything he may swallow. In any case, those pesky, plant chewing, slimy critters need to be eliminated and summer is a great time to get on top of them.

Many of the mail order companies have their new catalogues out now and while it's hot you can hide inside and devour pages of wonderful new bulbs. Every garden should have bulbs, they must be the easiest plant to maintain and there are hundreds to choose from. I am particularly fond of daffodils of every and any kind. How can you not love their wonderful happy faces popping up in spring, cheering up even the dullest day?



If daffs are not your thing what about blue bells, freesias, grape hyacinth, hyacinth, iris, lilies, crocus, snowdrops and tulips? You really can't go wrong. They grow in all types of conditions and are very adaptive if you don't

have the ideal location. If you fill pots with bulbs at this time of the year, keep the pots out of the heat for now and place them near the front door in spring, then put them away again when finished until the following spring for years and years of joy. For the garden, buy as many as you can to create a mass display, although they do spread quite quickly if you are on a tight budget. Plant them in

clumps as this adds more impact when they flower (single plantings get a little lost in the spring flush). If you have groves of tree plantings, mass plant bulbs underneath them, this creates a beautiful, no nonsense, easy care garden. Don't forget to mulch, so you don't have too many weeds.

I also love Christmas lilies (*Lilium longiflorum*) with their stunning white fragrant trumpet opening up at Christmas. These bulbs are purchased later in the year, during the winter, and they do love a bit of special attention to the soil, such as plenty of manure or compost.

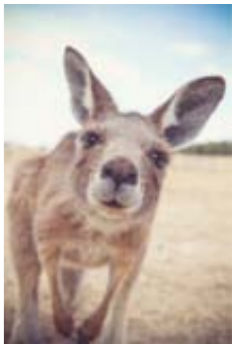
If you are planning on planting any trees this year, consider bare rooted trees (as you can buy a bigger tree for less when they are not in a pot). They do require a little more care when planting, but generally they are easy and cheaper. If you are happy to buy bare rooted trees, now is the time to make some lists and start ordering as the nurseries run out quickly and you do not want to miss out. Even if you want trees in pots, think about ordering them now to avoid disappointment.

Now is the perfect time for planning your garden, whether it's a brand new garden or a spot that needs a re-jig. This hot weather allows you to see the garden in all its glory, or not. Check out what is working and what is not, in many cases you may require some shade or a windbreak. If you are planning a vegetable garden, you want a spot with plenty of sunlight, or if you are doing a courtyard you want protection from the wind and shade. Wander around and view the garden at different times of the day to get a full perspective. Also look at the garden from within your house, as you want the view from inside to be a feature as well.

Finally and most importantly, do your soil prep. This is boring, but I guarantee you will have success with your plants. Good soil grows great plants.

Experiments in Happiness

An occasional column
by the Smiling Kangaroo



'A positive attitude may not solve all your problems, but it will annoy enough people to make it worth the effort.'

Herm Albright

If you are reading this column then it probably means you are interested in happiness. That gives you an amazing set of advantages. Happy people are about half as likely to catch a cold and they have a 50% lower risk of heart attack or stroke. Overall, happier people live longer and healthier lives and let's face it they are way more fun to be around than the angry, the incessantly complaining and the generally mean and unkind.

Now some of you might be tempted to tell others about this happiness advantage only to be told it's a bit of touch feely hippy rubbish. But if so, let the doubters know that a leading American business school has found that companies with happy employees outperform in the stock market and that people who are happy as young adults go on to earn more than their unhappy peers later in life. Students who attend schools that emphasise happiness through social and emotional well-being have better academic results and your doctor will make a faster and more accurate diagnosis when they are happy. It seems happiness matters everywhere.

A happy life is not one where we pretend to be 'up' all the time or try and deny difficult or uncomfortable or painful emotions and circumstances. Happiness teaches

us to appreciate and enjoy the good things and this gives us the capacity to cope more effectively with the bad times.

Happiness isn't just the big things, it is to be found in the many tiny things that make up your day – like smiling at a stranger in the supermarket queue, laughing and chatting with friends, seeing the first buds of freshly planted summer vegetables – any of a myriad of things that fill our life with blossoming moments of joy. If only we notice and appreciate them.

Be brave, life is joyous!

The Smiling Kangaroo

Three Happiness Tips

- 1. Experiment to find out what makes you happy.** Different things make different people happy. If you aren't sure what your hot spots are, experiment. Try different things out. Find out what you enjoy most. The answers just might surprise you.
- 2. Gratitude sessions.** Along those lines, it is a good practice to have a daily gratitude session. Think about what you have to be thankful for, and silently thank those who have done something good for you in some way. If you have time, take the time to call them or email them to thank them.
- 3. Take time to savour life.** Instead of rushing from one thing to another, resolve to have less to do each day, less appointments and fewer tasks. Then do each thing slowly, with mindfulness and ease, and try to be present in the moment. And truly enjoy whatever it is you do, from talking to eating to walking to just sitting.



Owner operator, based in Hall

We do:

- Soil excavation and removal
- Green waste and stump removal
- Rural driveways
- Site cuts and clearing
- Post holes 200mm – 600mm
- Landscape preparation
- Star picket & rural fence removal
- Water tank sites

We also have:

- 5.5 tonne excavator
- 12 tonne tipper

Bobcat attachments:

- Trencher
- Pallet/brick forks
- Hay bale spears

Call Craig to quote on all your Bobcat and Excavation needs.

0428 751 023

www.cmcbobcat.com.au

HALL STOCK FEEDS

WHOLESALE AND RETAIL PRODUCE MERCHANTS

FOR ALL YOUR PRODUCE NEEDS

All Animal and Birdseed

Fencing Materials

Irrigation Equipment

Steel strainers

Treated Pine Products

8.00 am – 5.30 pm weekdays
8.30 am – 12.30 pm Saturday

6230 2631 6230 2644

GLADSTONE STREET, HALL ACT 2618

Riverview Homestead B&B

1173 Wallaroo Road, HALL

Your hosts:
Les & Robyn Beresford

www.riverviewhomestead.com.au

phone: 6230 2637 or 0417 463 601 email: lesrobdj@bigpond.net.au

From the editor

Congratulations to Hops and Vine! Such a tasteful renovation of Kinleyside Hall and I for one am loving dropping in to buy an excellent bottle of local wine on my way home on a Thursday evening. After so much hard work, Craig Starr's function centre is attracting interest from China and Japan as well as local weddings and functions. Capital Wines and the Wandering Goose are in full flow in Hall's CBD. Farmer Brown's amazing hard work is making his truly free range eggs legendary. And I can't believe it is almost two years since *Daughters at Hall* took on Hall Premier Store. What they all have in common is a lot of very hard work. Welcoming the Smiling Kangaroo to our pages, and their advice to find out what makes you happy, Joseph Barbera's wisdom '*happiness is the real sense of fulfilment that comes from hard work*' might be appropriate.

After the school closed there was a time when it felt like Hall might be heading into a small recession, but now a short walk around the village and you get the sense that Hall is really buzzing with small business. Even I am enjoying my little sole trader business and have almost mastered the whimsies of GST thanks to John at Lincoln Partners.

Please continue supporting our local businesses.

Until next time,
Jo Hall

HALL METAL FABRICATIONS

General welding
Aluminium welding
Custom alloy ute trays and canopies
Custom alloy tool chest/cabinets
Alloy boat repairs and modifications
Stainless steel welding and fabrications
Sheet metal cutting and folding

1 Bootmakers Lane Hall ACT 2618

02 6230 2600

Fire fighting

'The Dolphin' is a water-powered jetpack used by Dubai fire fighters. They are used in conjunction with jet skis and enable fire fighters to get to fires quickly and avoid potentially life-threatening delays caused by traffic congestion. Once they arrive at a fire the fire fighters strap themselves to a giant hose, which uses water to propel them into the air. Fire fighters then use the water from the same hose to put out the fire. The Dolphin is used to fight fires on boats, roads, bridges, beaches and high-rises. Not sure they will catch on in Australia, but you never know!



The Rural Fringe – ISSN: 1329-3893

The Rural Fringe is a community newspaper published in 600 copies every second month by the Village of Hall and District Progress Association Inc (VHDPA) and distributed free to mailboxes of the 2618 postcode. It is also available online at www.hall.act.au This publication is funded by the advertisements so readers are encouraged to support the businesses advertised.

Contributions

Everyone is welcome and encouraged to contribute to this publication, particularly local community groups, however it is at the discretion of the Editor as to whether submitted articles are published or not. These deadlines ensure publication by the 10th of every second month.

February issue deadline is 10 January August issue deadline is 10 July
April issue deadline is 10 March October issue deadline is 10 September
June issue deadline is 10 May December issue deadline is 10 November

It is the policy of the VHDPA that articles which are dominantly about the profit making activity of any group or individual can only be accepted for publication if the same issue carrying the article has a paying advertisement of similar size.

Contributions to ruralfringe@hotmail.com or PO Box 43 Hall ACT 2618.

Advertising rates (per issue)

large (quarter page)_\$80 medium (eighth page)_\$40 small (three sixteenth page)_\$30

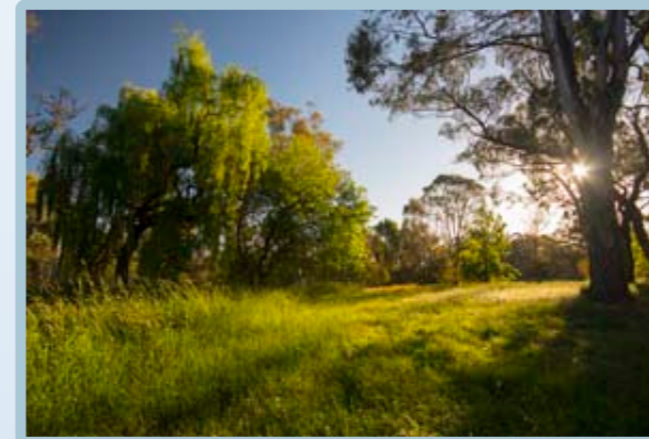
Other information

Editor: Jo Hall

Sub-editor: Bob Richardson Enquiries to the Sub-editor on 0407 071 245 or ruralfringe@hotmail.com

The views expressed in this journal do not necessarily reflect those of the Editor, the Sub-editor or the VHDPA. Some of the material in this journal may be copyright. Please contact the author or the editor for permission before reproducing articles.

Out and about



Photos of Hall oval, shearing shed and playground by Paul Porteous

A world away from the pressures of life...
only half an hour from the city of Canberra.

 **Geranium HOUSE**
DAY SPA & SKIN CARE

Massage
Medi Pedi
Spa Packages
Hydrotherapy
Paramedical Skin Care

(02) 6230 9220 | www.geraniumhouse.com.au

Four generations at Hall Preschool



Zahra Palethorpe, 5, with her 'Poppy', Bevis Brown, on the last day of preschool, last year.

Zahra was the fourth generation to attend Hall preschool, with her great grandparents Ross Brown and Grace Kilby, grandfather Bevis Brown and mother Kerrie Palethorpe each attending the Hall school during their childhood.

hall village
post office &
gift store



Salut! Baroque
2017 CONCERT SERIES
Albert Hall, Commonwealth Ave

"Origins and Explorations"

Enjoy music by Bach, Vivaldi, Handel and more

Visit our website or phone for this year's brochure

Enquiries: Ph: 6230 9262

www.baroque.com.au



Daughters At HALL

SINCE 1882

@daughtersathall
 @daughtersathall
 halldaughters.com.au
 6230 2457

On the Menu now:

Daughters Spider, your favourite soda poured over ice cream and topped with a crunchy noodle chocolate spider! Smoothies, juice and more.



First and third Tuesday of each month:

Seniors discount.

Coffee and Cake or Slice \$8.00

Bike Riders and Walkers welcome

Tap and cold water available.
Buy one Coffee and the second one 1/2 price.

Book exchange

Come in have a look at the book exchange; it has a good turn over of new and interesting books. Exchange or sit and have a coffee and a read. Exchange books always welcome.

What's happening?

Book your table with friends and family, get together with your street, village and community for great food, good company, and live entertainment.

24 March, 6pm

@Beersburgers&pies,

A bloke's opinion. Two mates trying the best beers, burgers and pies in the Canberra region and beyond. Check out their page. Cooking the best burgers ever at the Daughters.

8 April, 6pm

AtSea,

Jeff and Chrissy are back to cook up a seafood delight. Delicious seafood straight from the boat to Hall. Put your seafood orders in for Easter on the night.

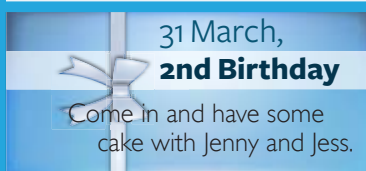
Menus will be available closer to the date, at the Daughters, and on Facebook.



Pet Friendly Café

Treat your puppies. With every coffee, cake or slice order receive a free Puppuccino or a Beef Crunch.

Remember to get your coffee card.
10 cups, receive one free.



Stocking local produce:

- Farmer Browns Eggs
- Capital Honey
- Homeleigh Grove Oils, Vinegar

Also available:

- Milk
- Fresh bread daily
- Newspapers Dry cleaning
- Ice cream Lollies Alcohol

Home Baked Cakes, Slices, Muffins.

Cakes made to order, with 48 hours notice.

Welcome back; hope everyone has had a great break, relaxing and enjoying your Christmas and New Year with family and friends.
Special thanks to Anne (Mum, Nanny) for helping cook 97 Christmas cakes! We have received great feedback from so many of you, who now love our Christmas cake; others have complained that now they have to share with the rest of their family! This makes all the hard work and long hours worthwhile. Special thanks also to Roz for making the 30 puddings. They were delicious.
We bake, we bake well, we bake really well, we bake the best Cheesecake. Come in and try; its worth it.

Staff news

Good-bye and best wishes to **Kim**. Thanks for all your baking, dancing and laughs.

Good-bye and best wishes to **Ben**. Thanks for all your hard work; missing your speed and strength.

Good-bye and happy travels **Chloe**. Leaving 16 Feb, thanks for your hard work; we will miss your outlook on life.

Birthday Shout outs

Lauren 8 February – Happy 21st Birthday!

Joel 20 February – Happy Birthday!

Employee of the month

Lauren our weekend young lady, turns up whenever we need so reliable working a full time job and studying. Nothing is too hard for Lauren our super fast cook. Thanks for your strong commitment to us; it's an absolute pleasure working with Lauren. She is always positive and never has a bad word to say of anyone. Well done!

