

RURAL FRINGE

Journal of the Hall district



VOLUME 21 ISSUE 4

August 2014

HALL PROHIBITION BALL

STORY BY JOHN CARSON

A black limousine with white walled tyres and running boards smooched its way up to the entrance of the pavilion. As it pulled to a halt a chauffeur in full livery jumped out and opened the near side passenger door.

I should warn you that if you have a weak heart and are easily excitable then perhaps you should read no further.

The legs that swung outward from the dark interior were long and slender and seemed to go on for ever. They were sheathed in black fishnet stockings and patent Jimmy Choo stilettos. A blood red skirt with a split up the side exposed stocking top and naked thigh — the line between demarcated by a scarlet garter. If there was a body attached to those legs I didn't see it as my glasses had long since fogged up.

The Hall Ball — 1920's style - it was going to be that kind of night.



As I made my way to the pavilion entrance some sinister dude in black overcoat with turned up collar and dark shades checked me out for illicit firearms and bootleg liquor. I was clean on both counts. I opened the door and the music swept over me. It was a favourite of mine — Wilson Pickett's 'At the Dark End of the Street'. Bring it on baby!

The girl that welcomed me and told me to have a good night was Angie. She wore a red dress and had a mega watt smile that lit up her whole face and made her eyes sparkle. I promised her I would and I kept that promise.

Everywhere I looked there were these classy girls in short sequinned dresses, sleeve length gloves and headbands that sprouted feathers. The men sported that much black — ties, shirts, suits — that the event could have passed off as an undertakers convention. Particularly impressive was the

PHOTOS BY TIM BENSON, CAPITAL MAGAZINE



MC for the evening, Maestro Dave Kilby, resplendent in brilliant white jacket with small calibre biretta. I guessed that heckling would not be a priority item for anybody tonight.

The opening stanza for the evening was champagne and chat as the guests mingled and staked out their territory. The six piece band kept the mood mellow, languorous and sharpened the appetite for both the food and the excitement to follow.

After the formal welcoming speeches and loudly applauded news that the majority of the proceeds for the evening would be donated to the Hall Rural Fire Service, the culinary part of the evening got under



way. Huge platters of food on silver trays were delivered to each table and for a short while the level of chatter was subdued as guests sated their hungry palettes. There would be no rumbling of empty stomachs on this evening.

And then it was time for the auction — always one of the highlights of this annual ball. Rising to the occasion and cutting a dashing figure in his maroon blazer was that auctioneer extraordinaire - Craig Sheargold. To see and hear Craig in full flight is one of life's great pleasures and hence it was no surprise to see wallets and purses spilling out their contents of cash and credit cards in response to his impassioned call to clear the priceless treasures on offer.

HALL PROHIBITION BALL

Another highlight of the night was awarding the prize to the lady's attire that best reflected the Prohibition theme of the evening. Young Nikki Carson from the badlands of Wallaroo took out first prize and gave an impromptu Charleston dance as a way of saying 'thank you'.

Then it was on to some serious dancing. The band struck up 'My Funny Valentine' — another favourite of mine. But what about the singer! This guy caressed the melody and lyrics like he had one very special girl in mind. And judging by the looks on many of the girls present, I guess a lot of them were hoping it was meant for them. Turned out he wasn't even with the band but one of the guests. I'm thinking Broadway is calling, David!

However, the principal singer with the band for the rest of the night was a girl called Toni. And when Toni sang the only thing everybody wanted to do was to grab their partner and boogie the night away. It was midnight when the band started to wind down and the dancers started to leave the floor.

I caught up with the girl who was the winner of the best costume for the night as she made her way to the exit. I congratulated her and told her she looked terrific. She smiled and gave me a knowing wink.

Some people say that nothing good happens after midnight.
Bulldust!

The Hall Prohibition Ball — you had to be there!



INTRODUCTION BY TRUDIE AND ANGIE

Saturday 21 June 2014 saw Hall celebrate its 6th annual Ball. As a tribute to the history of our village and district, the theme of 1920s Prohibition was chosen to set the scene for an evening of fine food, dancing to a live big band, period costumes, and general revelry.

Our very own local artisan printer, Sam Steggall from Artforme Letterpress Studio, and his amazing Heidelberg printing press, produced gorgeous invitations reminiscent of the 1920s. Our usually rustic country Pavilion was transformed under the inspired and experienced hands of Hall Ball Committee members Mel Riches and Steve Reynolds (from the Hall Volunteer Rural Fire Brigade), into a magical world twinkling under strands of fairy lights with gloriously set tables, beautifully adorned with period centrepieces crafted by our very talented Hall preschoolers. Guests were well fed with warm appetisers, shared platters to the tables for main course and an unending dessert buffet by Canberra caterers Eat Your Words Catering.

Local identity, David Kilby, returned again this year as our MC, and did a fabulous job keeping the evening rolling along. Still unmatched on the most original footwear, David's gentle humour and commitment to building community inspires us.

No Ball is complete without music and dancing. The incredibly gifted and professional Canberra big band, The Method, enticed us with their tunes, ably led by trumpeter Tim Benson; the dance floor was rarely empty.

Technology can be a wonderful thing, and this year the Ball went hi-tech! Thanks to the know-how of committee member Kate Betts, a photo booth was creatively arranged, complete with a treasure chest of 1920s props to inspire photos and poses. Photos were then posted to the Ball's very own facebook page for all to enjoy in the light of day!

The auction is always an entertaining part of the evening, and once again Craig Sheargold was incredibly entertaining, auctioning many fabulous items. This year Craig was ably assisted by another experienced auctioneer, Greg Ryan from Yass. For those preferring a more subdued approach to securing a prize, the silent auction didn't disappoint. Thank you to the guests who purchased items on the evening, no doubt you have enjoyed them.

The prizes didn't stop with the auction. The incredible effort everyone made to come dressed in Roaring 20s attire was amazing. The accolade for Best Dressed Couple was earned by Rod and Denise Barnes, who were spectacular in matching black and yellow outfits. Nikki Carson won the prize for most authentic costume, shimmering in silver beading and heels. Greg Ryan was the only man to don a pair of Gangster Shoe Spats. Very cool!

... continued on page 19

**Out
and about**

Troy Magyar and Rod Barnes volunteer their time to upgrade Hall Showground road.




**Annual General Meeting
of the Village of Hall and District
Progress Association**

will be held on Wednesday 20 August 2014 at 7 pm
at the Hall Pavilion.

Annual subscriptions of \$10 can be paid at the door.

Nominations to stand as a general member
or office bearer on the committee
should be lodged with the Public Officer
Rosemary Javanovic: rosejov@bigpond.com
Nomination forms can be found on the
Hall website: www.hall.act.au

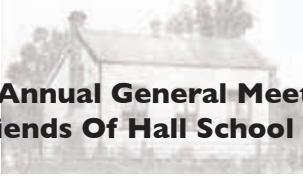
what's on . . .
at
St Michael &
All Angels

Do you have a pet dog, cat, horse, or llamas, or even pet worms in your garden?

. . . then bring them along to St Michael's annual 'Blessing of the Pets' service on **Sunday 21 September at 11am**. All (well-behaved) pets, and their owners, are very welcome at our annual outdoor service. Stay and linger after the service for a sausage sizzle lunch and some pet playtime. We'd love to see you . . . and your pets.

Look ahead to Spring . . .

St Michael & All Angels will be holding their annual Spring Fete on **Saturday 18 October** from **10am-2pm**. There'll be lots of tasty treats at the cake stall, yummy hot food for lunch, games and activities for the kids, raffles with terrific prizes and lots more. Mark the date in your diaries.


**Annual General Meeting
of Friends Of Hall School Museum**

will be held on 7 August 2014 at 11am
at the Hall School Museum – in the School Staff Room



BRINDABELLA EQUINE
 MOBILE VETERINARY SERVICE
0407 074 633

- Mobile vet - all equipment and tools on site first time, every time

Dr. Olivia James BVSc(hons) MACVSc (Equine Dentistry) CMAVA

olivia@brindabellaequinvet.com.au
www.brindabellaequinvet.com.au

find us on Facebook 


MAJURA PLUMBING

Mathew Patch
 Owner/Operator

Plumbing Draining Gasfitting

• 24x7 service • No job too small

0407 483 510
jmpatch@bigpond.com

ACT Lic No: 2007471
 NSW Lic No: 235525C



fireside FESTIVAL

FIRESIDES-FLAVOURS-FRIENDS

The Fireside Festival is on this August. An exciting time of year when friends embrace the cold and come together to enjoy winter flavours by roaring firesides.

The Poachers Pantry is the place to be! Live music will be performed by local artists every Saturday and Sunday lunchtime. Chicago Charles will be playing on the 16th, 23rd and 30th and Evan Packard will be playing on the 17th, 24th and 31st. Top your visit off with our five course 100 Mile Degustation menu for lunch - a five course lunch designed using only ingredients from within a 100 mile radius of Poachers matched with our Wily Trout wines!

Poachers Pantry will also be home to The Tinmen's Sculptures - these spectacular works of art will be scattered around the cafe's lawn and garden. While you are here, be sure to check out our smokehouse shop and cellar door. Open Monday to Sunday, 10am till 5pm.



If you have ever been curious about the process behind Poachers Pantry's smoked meats or Wily Trout's wines, come join us for our newly introduced Smoked Meat Master Classes or Gumboot Vineyard Tours! The Poachers Pantry Smoked Meat Master Class is hosted by our very own Susan Bruce. She will be conducting a tour of our smoked meats factory, a demonstration of how meats are smoked in a mini household smoker and a tasting of two smoked meat dishes matched with Wily Trout wines. The Wily Trout is a walking tour with our vineyard manager, William Bruce, through our Wily Trout wines as he explains the background and process behind growing our famous Wily Trout wines. The tour will be finished off with a personalised tasting of our entire selection of wines in the Wily Trout vineyard and you will also be provided with a signature pair of Wily Trout Gumboots.



Poachers Pantry will also be hosting the annual Fire Ball on Saturday 11 October to raise money for the Wallaroo Bush Fire Brigade! A night of fabulous food, wine, live entertainment, auctions and more, it is sure to be a night enjoyed by all. Keep an eye on the Poachers Pantry website and facebook for more details closer to the date.

Contact us on **(02) 6230 2487** or at **functions@poachers.com.au** for more information.



— creating delicious stories —

Poachers Pantry Smokehouse Café

Situated between Hall and Murrumbateman. Traditional smoked meat, seasonal flavours and cool climate wine.

Café Brunch: Sat & Sun, 10am
Lunch: Fri, Sat & Sun, 12pm to 3pm
Dinner: Fri & Sat from 6pm

Cellar door, Farm shop & coffee 7 days, 10am to 5pm
02 6230 2487 poacherspantry.com.au

Endless Beauty

Shop 3, 2 Victoria Street, Hall



OPEN MONDAY TO SATURDAY

Facials	Manicures	Pedicures
Waxing	Tinting	Eyelash Extensions
Spray Tanning	Makeup	Eyelash Perming
	Solarium	
Relaxation Massage	Hot Rock Massage	
Remedial Massage	Trigger Point Therapy	
Lymphatic Drainage	Sports Massage	
Pamper Packages	Skin Analysis	
Body Treatments	Gift Vouchers	

ENDLESS HEAVEN

- Enjoy an endlessly beautiful facial entwined in a full body relaxation massage

2 hours of pure bliss
for only \$130

BRIGHTEN UP FOR WINTER

- Pop in for a Maintenance Quick fix treatment facial, a pure collagen eye treatment, an eyelash tint, eyebrow tint and an eyebrow wax.

1 hour 15 mins \$95

phone: **(02) 6230 9703**
after hours: **0433 596 014**

Hall

Collectors

by
Bob Richardson



Hall collectors meet at Gooda.
Gail Hartshorn greets the collectors.

Hall Collectors' Club event was held on 28 June. There was a blizzard, it was raining but over 30 Hall district residents travelled to the event at Gooda. What a dazzling collection was on display. BBQ kings Bill P and Dennis G dished up the gourmet bangers while hosts for the day Ron and Gail served the draught beer and desserts. If you wish to join our merry Hall collectors contact club secretary, Bill Pearson or president Bob Richardson. See the Hall District website for details, www.hall.act.au.

Gibley GARDENING

For all your gardening needs

- Mowing - small & large scale
- Trimming/Hedging/Pruning including roses & fruit trees
- Mulching • Weeding • Fertilising
- Soil improvement • Planting
- Green waste removal

QUALIFIED HORTICULTURIST

Phone: **0417 682 540** (Charlie)
0428 275 701 (Lisa)

E mail: LKAENEY@DOGTRAPDESIGN.COM.AU

FERTSPREAD



Independent fertiliser
dealers and spreading
contractors



Hume Hwy, GUNNING, NSW

Super, Lime, Dolomite, Gypsum, Agri-Ash, Manures, etc

- Sales
- Delivery
- Spreading
- GPS Mapping
- Soil Testing



ph: **1800 500 184**
paulwyer@fertspread.com



www.fertspread.com



The Village People

Allyson Wedrat

by John Carson

Another in a series of interviews with people who live in Hall Village and its immediate environs.

One of the great joys in life, for some of us anyway, is to sit back after a day's hard labour and enjoy a foaming glass of best ale in a favourite tavern. So much the better if it has been a cold and blustery winter's day with the occasional shower of sleet and hail buffeting on the window panes but there is a roaring fire burning in the open hearth and all is right with the world. And if you are on assignment, giving moral purpose to what some might view as a frivolous and reprobate way of spending an afternoon, then so much the better.

On this wintry of winter days I am comfortably ensconced at an intimate table in one of Hall's longest established hostelries – The Wood Duck Inn. Sharing my table and prepared to share a little of her private life is the proprietor of the establishment herself – Allyson Wedrat. To say that Allyson is probably one of the hardest working people in the village is in no way to deprecate the good endeavours of what others labour at and achieve, but when you consider that Allyson's days start early and finishes when the last patron has left her establishment in the late hours of the evening – and we are talking seven days a week – then I think you will concede that it would have to be a labour of love that keeps you going. And for Allyson it is.

I ask the obvious question: 'Why do it – what keeps you going?' She doesn't even have to pause to think about it, so certain is her answer.

'Nineteen years ago I got a part-time job as a barmaid in this tavern' she says. 'It was one of several jobs that I was holding down at the time – but this one was special. I loved everything about it – the warmth of the people who dropped in and wanted to have a drink and a chat, the rustic atmosphere of both the pub and the village, and the general feeling that life was good and fulfilling. I guess you could say that I was a lady in love.' She laughs out loud and tosses her head back in a carefree manner, her mane of blond



hair cascading around her shoulders, and for a few moments I can see that the years have fallen away and she is savouring the memories of a time gone by.

Born in Warwick (Queensland), one of a blended family of six children, the family moved to Roma and then to Townsville where Allyson attended the state high school. She moved to Canberra in the late 1970's where she completed a secretarial course before joining the Department of Immigration and Ethnic Affairs. Then followed a six year stint as the Executive Officer of an Industry Training Advisory Board which covered IT, telecommunications and printing. She then moved to Mackay to become a compliance officer. Strangely, Canberra still maintained a magnetic pull on Allyson and it wasn't long before she was back once again in the nation's capital.

Love was also on the horizon for Allyson. To everyone he was known affectionately as Jimbo. For Allyson, of

course, it was much more than that. Here was a bloke that she wanted to share the rest of her life with. In 2007 the two of them became the new lessees of The Wood Duck Inn and in a sense, for Allyson at least, it had the mark of destiny about it. And not long after they also took over the lease for the adjoining cafe The Ugly Duckling. Life was good and the businesses remained part of the fabric of the village life. While there were many activities celebrated at both the cafe and tavern throughout the year, the annual Hall Christmas Party was always one of the major highlights and drew people from far and wide. The presence of the Hall Brass Band at the Christmas Party was of course always a big draw card.

But just as it seemed that life could get no better tragedy intervened. On a warm summer evening in a quiet suburban street not far from the family home Jimbo was involved in a motorcycle accident and died from the injuries he sustained. Things would never be quite the same again for Allyson. Time is of course the great healer and though life continues unabated there always remains a certain emptiness which for many of us who have suffered a loss can never be filled.

Hall Pre school

Cindy Condon

Classroom Teacher, Gold Creek School, Hall Preschool Campus

The tavern and coffee shop still provide an important social hub for both villagers and residents of the surrounding suburbs. Allyson is hopeful its importance will increase as some of the development plans which she has for business expansion begin to take shape. Foremost amongst these are:

- internal structural changes to give greater flexibility in extending space requirements between the cafe and tavern when functions demand it
- extension of the outside entertaining areas
- provision of a courtesy bus.

There is much to do and much to look forward to, says Allyson. The energy of the lady amazes me and I feel a little slothful as I drain my glass and watch the froth slide lazily down the sides. Still, we can't all be workaholics I think – as a note of comfort to my indolence.

The interview has come to an end and I am profuse in my gratitude to Allyson for taking the time and effort to talk to me. The tavern is in good hands and the future looks bright. And on the strength of that I'll have one for the road. Cheers!

The children of Hall Preschool delve into their community

We have had a busy Term 2 at Hall Preschool, learning all about the different roles that people play in our community. We have had a visit from Constable Kenny Koala, who talked to us about road safety. One of our dad's, a member of the ACT Rural Fire Service came to teach us all about how they help to keep us and our houses safe; and an ACT Federal Police Officer (another of our dad's) visited to tell us how the police help to keep the community safe. We went on the Action Bus Wash Tour and learnt all about buses and the drivers who help get Canberra's people to where they want to go.



We also paid a visit to Hall Premier Store to see the ways in which the workers there help other people in the community. The children have learnt a lot this term and had lots of fun role playing doctors and nurses, hairdressers, construction workers and more.



Hall Preschool loved our visit to Hall Premier Store, where we each bought an apple then sat and enjoyed it in the store.

**Hall
Veterinary
Surgery**

PROUDLY SERVING THE COMMUNITY
OF HALL VILLAGE AND DISTRICT

www.hallvet.com.au

6230 2223

corner **Victoria & Hoskins** Streets
Hall Village

LINCOLN PARTNERS

CANBERRA
CHARTERED ACCOUNTANTS

Lincoln Partners work with small to medium sized businesses and individuals to minimise tax, reduce risk and maximise their growth potential.

Lincoln Partners specialise in:

- Business and financial structuring
- Taxation compliance and advice
- Cashflow analysis and budgeting
- Business sales and purchases
- Financial strategies and analysis

principal: **John Howlett**

phone: **02 6100 4732**

fax: **02 6230 9474**

mobile: **0411 283746**

email: john@lpcanberra.com.au

postal address: **PO Box 282, GUNGAHLIN, ACT 2912**

street address: **3/10 Victoria Street, HALL, ACT 2618**



Rugby

in Hall



Hall Bushrangers mid season update

It's hard believe that we are at the halfway mark of the football season already and we are looking forward to the finals. In fact the Reserve Grade side have been in the top two sides all season. The 1st Grade side are in a rebuilding phase under the guidance of one of the most highly regarded coaches in Canberra, David Kinnane. It is a question of when and not if we will see Hall claim the Club Championships with both sides.

One of the things that set this club aside is the involvement of past players who know and understand what is the 'Hall way' of playing rugby. Hard and fair!

It is no coincidence that the renaissance of the performances of both teams is a result of the influence of the old boys who bleed the teal and black of our great club.

After 23 years of Hall rugby there is no doubt that we play and more importantly relate to each other in a certain way that set us apart from other clubs. We are a community of brothers and sisters looking out for each other no matter where we live or where we come from. We train hard knowing that there are no 'gimmies'. There is only one Ego in the club and he is a champion bloke. We play hard and for the full 80 minutes, no matter what the score is. Most importantly we celebrate the achievements of our players, of the club and our community in Hall.

We are proud of the fact that we support local causes such as the Hall Ball and continue to support those affected by cancer such as the Debbie Lee Memorial Cup and the World Greatest Shave. We will enhance the Hall ground with a heritage style scoreboard and we support the Hall Rotary Club at the Canberra Show.

More recently we have established a regular cricket club in the Sunday social cricket competition. Although we play at Melba we hope we will be able to see the ground redeveloped so that our local side can play at its real home in the not too distant future.

Finally special thanks to all of our supporters and sponsors for making playing either rugby or cricket for Hall a reality. To keep up to date follow us on Twitter, go to our website (www.hallbushrangers.com.au) or like us on our Facebook page for either the Hall Bushrangers or the Hall King Browns Cricket Club.

Locals

abroad



Greg Hayes cycling the Pyrenees in France

**ACT & Southern Tablelands
NATIVE TUBE STOCK
NURSERY**

Plants for farms
and windbreaks

contact:
Damian 0407 224 490

by appointment
Wallaroo

BETTER BLADES
Sharpening Service

- Knives
- Scissors
- Electric hedge trimmers
- Clipper blades - steel/ceramic

Sales and service
of Oster®, Thrive® Wahl®,
Andis® and
Sheer Magic® blades

contact: 0415 483 089 mobile or
02 6230 2440 phone/fax
post to: PO Box 250 HALL ACT 2618
drop off: 21 Gladstone Street, HALL ACT
email to: bblades7@bigpond.com

LIDO'S
FENCING
and Water Tanks

Domestic, Rural & Commercial,
Colorbond, Palings, Chain wire,
Pool fencing, Glass fencing

JAMES 25 years experience
Free quotes

**Bobcat hire
Post boring
Trenching
Truck hire**

0408 645 832 **6262 4065**



A more literate hair cut?

Not only can you have a fabulous hair cut at the Shearing Shed, you can indulge in a good read at the same time! The Shed is currently selling books for only \$2 each, so please go along and have a browse. Donations of books are also welcome. All money raised will be donated to the Hall Fire Brigade.

Local winners

Award winners for the fourth year in a row, Select Custom Joinery have been recognised for their attention to detail, high quality work and skill working with timber with the 'Technical Difficulty & Innovation' award. The awarded kitchen, built from plywood and recycled timbers with a concrete bench top, was all designed and built in Select Custom Joinery's workshop, including the concrete bench top.



As cabinet makers specialising in using timber and sustainable materials, their approach offers clients options such as recycled timber, plywood and bamboo as well as concrete bench tops. The business, run by Gino Monteleone, has an 'anything is possible' approach – 'Clients come to us because we are happy to work with their brief – we don't tell them what they can't have – we work with them about what they want. And if that involves curves or an especially fiddly detail, we're happy to provide that service' explains Mr Monteleone.

An option you should consider

W.J. Gibbs & Co Pty Ltd

Sell your cattle at Canberra Oaks Estate Saleyards

"Weigh it up"

We pre-weigh all the cattle - the best option for vendors and purchasers.

"Compare our fees"

You definitely will find savings in yard dues, handling fees and commissions compared to most major operators.

"What does it cost in transport to get to major centres?"

Does it really add up?"

Double handling in many cases for smaller numbers

Time off feed and water = weight loss

Longer time on trucks = stress

All this costs you money

You could have your cattle to us and on water within the hour.

We make it our business to get you the best buying support for your livestock by keeping in touch with market trends.

We have regular coastal and local butcher support for young cattle and we are one of the closest markets to a significant cow and bull processing works.

Regular attendees to our auctions are local re-stockers and feedlot buyers.



Greg Darmody 0412 677 641

David Reid 0429 383 500

Office 02 6299 2255
52 Monaro St Queanbeyan
NSW 2620



As a furniture maker with 27 years' experience, Mr Monteleone creates kitchens as pieces of fine furniture, challenging the assumption that furniture and kitchens are separate entities. Only fine furniture-grade materials are used. Traditional woodworking techniques such as finger joints are used to put drawers together and even handles are custom made according to each client's needs.

In a world where mass production has become the expected norm, Select Custom Joinery offer a unique service to those people who value high quality work and materials and are looking for a bespoke design.

More information about Select Custom Joinery can be found at www.selectcustomjoinery.com.au

from
the President

David Hazlehurst President

This is a brief update on what I wrote about in the June issue of the *Rural Fringe*. The Chief Minister has responded to our letter and with her encouragement representatives of the Association met again with officials from the Community Services Directorate to progress reaching agreement on the Hall Primary School site.



and long-term future of the site. As I flagged in the June issue, Rotary is interested in increasing its community presence and activity in Hall and is prepared to support the Progress Association in reaching a settlement with the ACT Government.

We learnt that responsibility for managing community facilities will soon move to the Economic Development Directorate. Until this occurs (in the next few weeks we understand) we're not able to progress negotiations. This is frustrating. However, the Community Services staff have offered to provide us with the most recent asbestos report for the site and some examples of occupancy licenses upon which we could base the agreement for the community's use of the site. They've also agreed to undertake further analysis of electricity and water usage on the site after we expressed concern that proposed charges were hard to reconcile with current use of the facilities.

We will hold the Association's AGM on 20 August at 7pm in the Hall Pavilion. It will be a good opportunity to hear about the activities of the Association and its affiliates over the past 12 months, as well as a chance for members to raise issues they would like to advance in the next year. Election of office bearers and committee members will also occur. Old and new members, and nominations for office bearers and committee members are of course very welcome. Details of the meeting and nomination forms are available on the website, www.hall.act.au.

Having received some encouragement from the Chief Minister the Association and Hall Rotary will now continue to discuss a partnership for the immediate

I had hoped we would be sufficiently advanced in our discussions with the ACT Government to be able to hold another public meeting on the same evening as the AGM. However, the combination of a delayed response from the Chief Minister and now the movement of the relevant functions between government directorates, means we don't yet have a negotiated proposal to put to the community. I hope to have progress to report very soon. It's been a long wait to bring these issues to conclusion.

Riverview Homestead B&B
1173 Wallaroo Road, HALL

"Relax with nature, in country comfort"

Your hosts:
Les & Robyn Beresford

www.riverviewhomestead.com.au
phone: 6230 2637 or 0417 463 601 email: lesrobdj@bigpond.net.au

DARRALEE QUARRY

Darralee Quarry has recently been re-opened. It was one of the RTA's main sources of road base for many years.

Supply and/or delivery of Road Base to suit gravel roads

Contact Paul on (02) 4845 8288 or paulwyer@fertspread.com



Brindabella Hills Vineyard Cafe

Visit our new cafe on the terrace at our cellar door.

Relaxed and tasty lunches with a glass of wine every weekend. Check out the menus on our website: www.brindabellahills.com.au

Taste our very popular wines and enjoy lovely views over the vineyard and into the valley and Murrumbidgee River.

Bookings for lunch, phone **61619154** or email cafe@brindabellahills.com.au

To find us, take the Wallaroo Road, turn left at Southwell Road, then right at Brooklands Road then left into Woodgrove Close. We are at the end of Woodgrove Close.



Letter to the editor

Sometimes items from the past suffer as they are shoved in the back of sheds and left to rot. If they are lucky someone finds them, treasures them and puts them in a museum where they can help tell stories from the past. Hall Village is very fortunate that the late Laurie Copping saved so many important items which help tell the story of the Hall School Museum. His legacy is continued by the current Friends of the Hall School Museum, a dedicated and passionate group who strive to keep the memories of Hall and district alive with exciting and interesting exhibitions on the site, as well as sharing the treasure that is the Hall School Museum. I am privileged to be a member of this group.

For a time after the closure of the Hall School in 2006, I kept the Museum open so visitors could enjoy and marvel at the desks, blackboard, teachers desk, chair and other antique pieces Laurie had treasured and shared in the Museum. In 2011 I was able to open another Schoolhouse Museum in the southern suburb of Chisholm. It was empty but luckily I had enough of my own collection to put in the largely intact rooms and bring the building back to life.

Sadly some of the collection had been sourced from old sheds and two items in particular were rotten. One was an early 19th century oak kitchen chair and the other an oak school desk from the 1940's. Expert skills and craftsmanship would be needed to fix these pieces and luckily those skills could be found in the craftsmen at the Hall Men's Shed! The men worked on these two pieces and they now look as good as new. They are on display in the Tuggeranong Schoolhouse Museum and visitors are so impressed that such skill and dedication in restoring such items is still alive and well in modern Canberra!

But I had a problem. I had an early 20th century swivel desk chair. This had not been sourced from some old shed and nor was it rotting! It was the first antique piece I had ever bought in the early 1970s. It had been broken by my sons when they were small – boys cannot ignore a swivel chair!

The Hall Men's Shed did a fantastic job of fixing this chair – it looks better than when I bought it! But I now have a problem. The focus of Tuggeranong Schoolhouse Museum is the period from 1898 until 1927 when Frank McGee taught at and lived with his family at the Tuggeranong School. We know from the many documents that Frank did indeed have a chair for his school master's desk – but it was broken!

The Hall Men's Shed has done such a great job of fixing my old desk chair that it is now too good to go on display!

However, if and when they come to visit, I will make sure it is there for all to see and to marvel at – as well, of course, as the kitchen chair and the school desk which look so terrific, and which also help to tell the story of the past!

Thank you Hall Men's Shed,

Sincerely

Elizabeth Burness

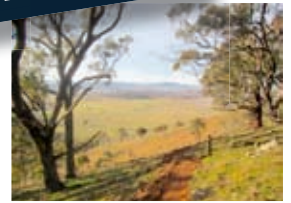
Curator, Tuggeranong Schoolhouse Museum

Hall welcomes

Centenary Trail users!

Biking, walking or jogging the ACT Centenary Trail? Welcome to Hall! We hope you will find time to look around, visit our General Store, and take some refreshments there, the Gumnut Cafe, or the Wood Duck Inn. Why not hit the Trail on Hall Markets Day (first Sunday of the month), or when the National Sheep Dog Trials, or Polocrosse are going on? Check our Calendar to see what is coming up. If you pick the right day you can also visit the impressive School Museum and heritage centre.

Enjoy the Trail!



Hall & District Events Calendar

Simple 'DIY' community events calendar
Its FREE, its simple, and its YOURS!

www.hall.act.au

> Coming Events

> Submit your Event



HALL METAL FABRICATIONS

General welding
Aluminium welding
Custom alloy ute trays and canopies
Custom alloy tool chest/cabinets
Alloy boat repairs and modifications
Stainless steel welding and fabrications
Sheet metal cutting and folding

1 Bootmakers Lane Hall ACT 2618

02 6230 2600

Rotary Club

recognises villagers



At their annual 'change-over' dinner on Tuesday 1 July the Rotary Club of Hall presented Community Service Awards to three well known locals – Alastair Crombie, and Tony and Margaret Morris. 'Honorary' villager Yvonne Robson was also recognised as a Paul Harris Fellow for her outstanding contributions to the work of the Club.



↑ Margaret and Tony Morris, and past District Governor Len Goodman

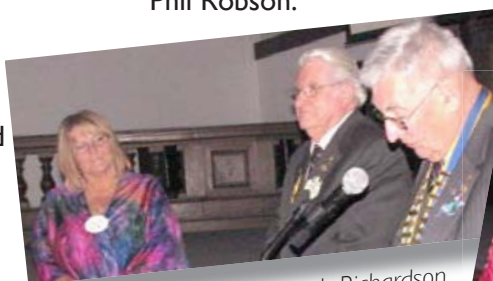
Tony and Margaret were recognised jointly for their huge contribution to the life of the community over a very long period of time, including voluntary serve with Rural Youth, the Royal National Capital Agricultural Society, the Queanbeyan Show, Hartley Lifecare and the Hall Markets, and the National Sheep Dog Trials. Tony has been on the committee of the Hall Progress Association for around 40 years, and has also had long and active involvement in the Bush Fire Brigade and the Hall Men's Shed. Both Tony and Margaret are now actively involved in the School Museum.

Unlike the Morrises, with their deep family connections to the Hall district, the Crombies came to Canberra from England in 1973, and moved to Hall in 1976. Like Tony, Alastair has been a long term committee member of the Progress Association, and has served as President on four occasions. He was heavily involved in the consultations and representations that finally issued in the Hall Master Plan and Heritage listing of the village, and in the negotiations with the ACT Government following closure of the school in 2006.

Yvonne has been in Rotary for a relatively short period, but has evidently made a big impact, in particular for her work for the Rotary Oceania Medical Aid for Children (ROMAC) program, but also in enthusiastically leading other initiatives in the community service area of Hall Rotary's work.

The change-over dinner was held at the Abbey at Gold Creek Village and was hosted by past President Adrienne Moss. The Award ceremony was chaired by out-going President Ralph Southwell, with awards being presented by past District Governor, Len Goodman. The new Club President is Tony Tucker.

Thanks are due to the Rotary Club of Hall, not only for taking care to acknowledge significant community service by members of the local community, but also for inviting a table-full of other Hall community members to share the fine occasion. This included the current President of the Village of Hall and District Progress Association, David Hazlehurst, and an earlier President, now editor of the *Rural Fringe*, Jo Hall. Others attending for this special occasion were Darrell and Olga Minion, Bob Richardson and Helen White, Mardie Troth and Phil Robson.



photos: Bob Richardson



Hall Natural Therapies

*Regain your health
and vitality*

Sick of feeling tired?

Hormones wreaking havoc?

Ongoing stress, skin or digestive problems?

Can't lose weight no matter what you try?

All your tests come back normal
but you still don't feel right?

Call Naturopath Anita Kilby

6230 9680 or 0411 494 680

or visit 2/10 Victoria St, Hall
hallnaturaltherapies.com.au
Confidentiality guaranteed

DOG TRAP DESIGN

GARDEN DESIGN CONSULTANT

BEAUTIFUL GARDENS

by **DOG TRAP DESIGN**

designer

LISA WALMSLEY

email: lkaveney@dogtrapdesign.com.au

web: www.dogtrapdesign.com.au

0428 275 701



Hall Pony Club

by **Lyn Anderson**

Three of our talented teenage girl riders from Hall competed in the Interschools Championships in Sydney on June 18, 19 and 20.

Amy Anderson Bowell (our granddaughter) and Tori Doak represented Radford College and Hannah Klep rode for Lyneham High. Several hundred horses and riders competed in this prestigious event. Amy was placed in four events, a 6th in Show Hunter Hack, with two 8th places and a 2nd in dressage on her beautiful new horse Teki.



Tori was placed 1st and 8th in show jumping, 7th in eventing and 8th in show hunter hack. Hannah was placed 4th and 6th in dressage and 6th in show jumping. Our much loved member Molly Hammond didn't compete but was on hand mentoring and encouraging.

A wonderful result for the girls, their schools and the Pony Club. Hall Pony Club welcomes new members (young and old). Pony Club rally day is held on the second Sunday of the month.

For enquires phone Nicky Anderson on 0412 566 898





clearview
total property services

- Maintenance
- Carpentry/Joinery, Tiling, Painting, Plastering
- Roofing
- Kitchens, Bathrooms, Wardrobes & Laundries
- Gardening

Property Image Consultant

Stuart Hensley
mobile 0418 449 781 email clearview132@bigpond.com

Gold Creek Station

A superfine experience

Function Centre

Weddings
Family Parties
Corporate Events
International Delegations

Peaceful Rural Setting
200+ seating capacity with full catering
Family owned and operated for over 30 years
Shearing & working dog demonstrations



Victoria Street, Hall Contact Craig on 0427 767 799
Email enquiries@gold-creek.com.au



YASS VALLEY WINES



Wine

SALE

All wine must be sold
HUGE DISCOUNTS!
(case lots only)

5 Crisps Lane, Murrumbateman
6227 5592
open Wed - Sun 10 - 5
www.yassvalleywines.com.au

'Still I Rise' by Maya Angelou

You may write me down in history
 With your bitter, twisted lies,
 You may trod me in the very dirt
 But still, like dust, I'll rise.

Does my sassiness upset you?
 Why are you beset with gloom?
 'Cause I walk like I've got oil wells
 Pumping in my living room.

Just like moons and like suns,
 With the certainty of tides,
 Just like hopes springing high,
 Still I'll rise.

Did you want to see me broken?
 Bowed head and lowered eyes?
 Shoulders falling down like teardrops.
 Weakened by my soulful cries.

Does my haughtiness offend you?
 Don't you take it awful hard
 'Cause I laugh like I've got gold mines
 Diggin' in my own back yard.

You may shoot me with your words,
 You may cut me with your eyes,
 You may kill me with your hatefulness,
 But still, like air, I'll rise.

Does my sexiness upset you?
 Does it come as a surprise
 That I dance like I've got diamonds
 At the meeting of my thighs?

Out of the huts of history's shame
 I rise
 Up from a past that's rooted in pain
 I rise
 I'm a black ocean, leaping and wide,
 Welling and swelling I bear in the tide.
 Leaving behind nights of terror and fear
 I rise
 Into a daybreak that's wondrously clear
 I rise
 Bringing the gifts that my ancestors gave,
 I am the dream and the hope of the slave.
 I rise
 I rise
 I rise.



www.mayaangelou.com

YASS VALLEY HOME LIVING SUPPORT SERVICE

Yass Valley Home Living Support Service is auspiced by Yass Valley Council. Services that may be able to be provided to people who live in the Wallaroo area include:

- Case Management
- Transport
- Respite Care
- Social Support
- Home Maintenance
- Home Modification
- Dementia Monitoring

To be eligible for support you must live in the Yass Valley Local Government Area and meet at least one of the following criteria:

- Be transport disadvantaged
- Be at risk of entering residential care
- Be frail aged
- Have a disability
- Be the carer of a frail aged person or someone with a disability

Yass Valley Home Living Support Service welcomes enquiries from residents in the Wallaroo area regarding provision of these services. You will be asked some questions to ascertain your eligibility for services and it may be necessary for you to wait a short time to have a full assessment of your needs undertaken.

Please telephone 6226 4555 for a confidential discussion.

Yass Valley Home Living Support Service
 Goodradigbee Centre
 67 Rossi Street
 YASS NSW 2582

telephone: 02 6226 4555
 facsimile: 02 6226 4207
 email: hlss@yass.nsw.gov.au
 website: www.yass.nsw.gov.au

TERRITORY ENERGY
ELECTRICAL DIVISION
ELECTRICAL MAINTENANCE
6230 9800
ACCREDITED SERVICE PROVIDER

Do you love poetry?

Would you like to write a poem for the Rural Fringe?
 Or maybe you have a favourite poem you would like us to print.
 Please send all articles, poems, news or photos to
ruralfringe@hotmail.com.

Karate

by **John Steggal**

Congratulations Hall karate students!

Well done to all students who passed their grading on 24 June. All students trained consistently well over the past six months to be invited to grade and then applied themselves and performed well to achieve their new rank. Here are the grading results:

Adults

Marjorie Crombie	6th kyu
Natalie Carroll	6th kyu
Andrew Shaw	8th kyu

Juniors

Xanthe Sheargold	6th kyu
------------------	---------

Pee Wees

Harvey Hazlehurst	9th kyu
Monohan Hazlehurst	9th kyu
Angus Deasey	8th kyu
Liam Stanton	8th kyu
Sophie Porteous	8th kyu
Layla O'Connor	7th kyu
Kevin Shaw	7th kyu
Ruby Sheargold	6th kyu

Most students have been training for more than two years and are steadily improving their strength and coordination in learning traditional karate.

For those interested in joining our karate club, you are welcome to come and watch our classes on Tuesday nights at the Hall Pavilion. Pee Wees (under 12s) 5-6pm with Juniors and Adults 6-8pm.

If you would like further information contact Sensei Sam (John Steggall) on **0430 153 375** or **sam@artforme.com.au**. New students welcome in both classes.

Hall & District Community Classifieds

Stuff to Sell, Give Away or Swap?
Equipment or Services for Hire?
Wanted to Buy?

Its FREE, its simple, and its YOURS

www.hall.act.au



> **Local Classifieds**

> **Place your classified**



Dr Jennifer Strachan

D.Min, M.A. CPC, MBTI Accred,
Clinical member CAPACAR, PACFA reg.

CLINICAL COUNSELLOR THERAPIST

For individuals, couples & families for:

- * personal issues
- * family issues
- * relationship issues
- * marriage preparation
- * marriage enrichment
- * personality profiling & coaching

Jennifer can be contacted by phone/fax on **(02) 6230 2570**
Mobile **0409 038 850** Email: **strachan3@bigpond.com**

Her office is located at
Rivendell 49 Oakey Creek Road,
Walloo via Hall NSW 2618 (off Wallaroo Rd).

ASBESTOS REMOVAL

Licensed Asbestos Removalist
& Building Maintenance

Phone Gary Reid

(02) 6227 0018

0423 807 747

"A class" licence 2006571

ABN: 83086566976

CANBERRA

ARWAYS

PTY LTD

FOR RELIABLE & EFFICIENT LTD
MOTOR VEHICLE TRANSPORT

CANBERRA – SYDNEY
CANBERRA – MELBOURNE

ALSO PICK-UP & DELIVERY ALL OTHER CAPITAL CITIES

For enquiries telephone **6242 7310** FACSIMILE 6242 7320
3 CHENEY PL, MITCHELL

Standard Plants

by **Lisa Walmsley**

I recently visited a garden that used many standardised plants to add a more formal structure to their design. These trained plants have the benefit of taking up less space than some of their bigger relatives, with their single trunk and clipped canopy you can add height into a garden without taking up too much space at ground level, and are a brilliant solution to a narrow space.



Standardized plants are a marvellous alternative to regular sized shrubs that potentially can outgrow their space. A row of standard plants forms a green wall, dividing spaces in the garden or a single plant may be used to provide a focal point or as contrast to less formal plantings. Many standard plants are also great for pots in courtyards or small spaces such as balconies or either side of your front door.

The best plants to use are bushy types with fairly compact foliage – some examples suitable for our gardens include Japanese box (*Buxus microphylla* var. *japonica*), cumquats, bay tree (*Laurus nobilis*), rosemary (*Rosmarinus officinalis*) and Arbutus unedo. Some flowering plants are also suitable, providing a lovely spectacle when in bloom: Camellia varieties, Gardenia

florida, Raphiolepis indica, and Fuchsia cultivars. Many trees are trained as standards, such as the ornamental weeping cherry, maples and the mop-top Robinia 'Umbraculifera' and these are usually grafted.

One of the major benefits of standardising a plant is the amount of control you can have over a plant that may ordinarily be rather unruly or untidy. For example: a *Laurus nobilis* (Bay tree) can be messy and huge in its natural form, but when standardised they remain neat and ordered.

These plants can be expensive to purchase, so if you have patience and a little determination it is possible to train them yourself. Ideally you should buy a plant with a straight stem, provide support with a strong stake. All the lateral branches below the proposed canopy should be removed. Some lower leaves may be kept initially to help develop strength in the stem as it grows. When the central stem has reached the desired height, pinch out the growing tip. This will allow the shoots below to mature and help form the canopy. Keep all the stems short in the first growing season, then prune to shape regularly. Any shoots from this time on that form on the stem should be removed.

ROCKIN
job feature walls & entrances
everything masonry

0406 763 939 ■ rockinjob@hotmail.com

bricklaying block laying rock laying cladding rendering
concreting machine hire project management



A unique
**BED &
BREAKFAST**
Experience

Our vintage carriages have come to rest
in picturesque and peaceful surroundings,
and so can you . . .

(02) 6230 2280



THE SHEARING SHED
HAIR SALON

Monday to Wednesday	9.00 – 5.30
Thursday	9.00 – 8.00
Friday	9.00 – 5.30
Saturday	8.00 – 1.00

Waxing and Tinting	
Thursday	4.00 – 8.00
Saturday	8.00 – 1.00



Unit 1/2-4
Victoria Street
Hall ACT 2618
6230 2284

Equine Dentistry

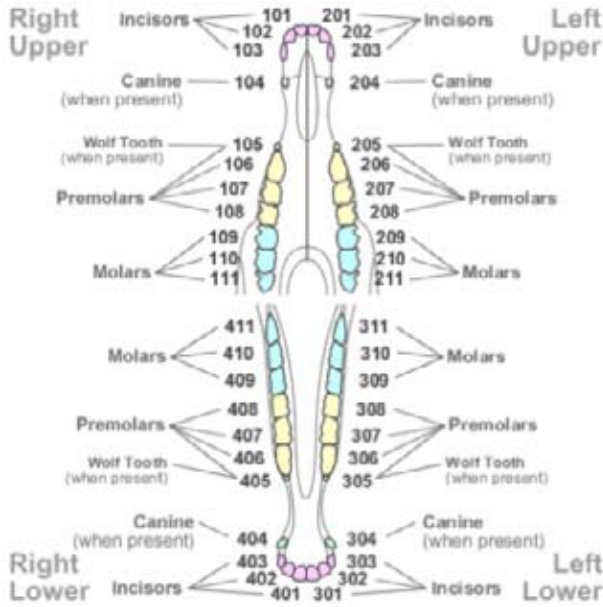
and routine care

by **Jack Davey**, veterinary student and **Dr. Natasha Hovanessian**

Unlike humans, horses have long teeth that continually erupt from the gumline throughout their life. Horses have evolved to graze for up to 18 hours a day. Their teeth are worn as they chew, with further eruption of their long cheek teeth allowing replacement so they maintain a grinding surface. Horses chew in a circular motion, causing the cheek teeth to be worn unevenly. This uneven wear can result in the development of sharp points along the edges against the cheek on the upper teeth and the tongue on the lower teeth.

Anatomy

The adult horse can have up to 40 permanent teeth, although females often only have 36 due to their lack of canines. They are 12 incisor teeth at the front, four canines, 12 premolars and 12 molars. The premolars and molars are commonly called the 'cheek teeth'. A numbering system is used to describe each tooth as seen in the diagram.



Abnormalities

Abnormalities, including sharp point, fractures and defects in the teeth often form. These can be addressed by a twice-annual dental evaluation by an equine dental veterinarian. If left untreated, these abnormalities may become painful causing the horse to misbehave when ridden and cause weight-loss when the animal cannot chew normally. Some common abnormalities seen on molars include

hooks on the back molars, wave mouths, ramps and excessive transverse ridges. If sharp edges on the upper cheek teeth get too long, they abrade the inside of the horse's cheeks causing ulceration and discomfort.

Routine dental

A routine dental provided by your local equine dental veterinarian is performed to correct any abnormalities that have developed in your horse's mouth. A routine dental involves the removal of all sharp enamel edges, and hooks and ramps, rounding of the canine teeth in males, creation of a

bit-seat at the front pre-molars and the correction of any other abnormalities. Traditional hand rasps and/or specialised power tools which do not rock back and forth on the tooth are used. It is considered essential to have a dental evaluation performed on young horses before a bit is placed in their mouth.

Canberra Equine Hospital have two veterinarians, Drs. Rebecca Walshe and Suzanne Polak, who have done advanced training in equine dentistry and are certified by Equine Dental Vets Australia. Rebecca is also a member of the Australian and New Zealand College of Veterinary Scientists, meaning she has done further study and been examined to a higher standard. When a veterinarian comes out to perform your horse's dental, they can safely sedate, perform a thorough physical examination and routine health check, as well as address any other issues.

HALL STOCK FEEDS

WHOLESALE AND RETAIL
PRODUCE MERCHANTS

FOR ALL YOUR PRODUCE NEEDS

All Animal and Birdseed

Fencing Materials

Irrigation Equipment

Steel strainers

Treated Pine Products

8.00 am – 5.30 pm weekdays
8.30 am – 12.30 pm Saturday

6230 2631 6230 2644

GLADSTONE STREET, HALL ACT 2618

Looking for a great horse vet?

- We just love horses
- Around the clock care
- We travel to you
- 'State of the art' hospital
- From the routine to the complex diagnosis and surgery - we do the lot

CANBERRA
Equine HOSPITAL

www.canberraequinehospital.com.au
email: equine@canberravet.com.au

6241 8888

Corner of Barton and Federal highways, Lyneham

from
the Editor

Our deepest sympathy goes to the family and friends of Liliane Derden, who lived on Victoria Street in Hall. She was one of 28 Australians who were among the 298 passengers aboard the flight from Amsterdam that was shot down near the Ukraine and Russian border. That a passenger plane can be shot out of the sky has shocked us all beyond measure. Our thoughts are with Liliane's partner Craig and her daughters Cassandra and Chelsea as they struggle to come to terms with this tragedy.

It is an awful symbol of our interconnectedness. That the armed conflict in Ukraine can result in a civilian death at our doorstep in Hall. That an action elsewhere in the world can affect us so profoundly in Hall and vice versa. That everything in the universe is connected, and nothing exists completely independently.

Until next time, Jo Hall



Hall children planting trees on National Tree Day

Hall Village Motors

Mon-Fri
7:30am-5:30pm
Saturday
8:00am-2:00pm

phone: **6230 2288**



Proprietors: Tony & Amy Hazelton
fax: 6241 7281

Letters to the editor



Here's your chance to raise issues and to engage in community discussion.

email: ruralfringe@hotmail.com

post: Rural Fringe
po box 43
Hall
ACT 2618



The Rural Fringe – ISSN: 1329-3893

The Rural Fringe is a community newspaper published in 600 copies every second month by the Village of Hall and District Progress Association Inc (VHDPA) and distributed free to mailboxes of the 2618 postcode. It is also available online at www.hall.act.au This publication is funded by the advertisements so readers are encouraged to support the businesses advertised.

Contributions

Everyone is welcome and encouraged to contribute to this publication, particularly local community groups, however it is at the discretion of the Editor as to whether submitted articles are published or not. These deadlines ensure publication by the 10th of every second month.

February issue deadline is 10 January
April issue deadline is 10 March
June issue deadline is 10 May
August issue deadline is 10 July
October issue deadline is 10 September
December issue deadline is 10 November

It is the policy of the VHDPA that articles which are dominantly about the profit making activity of any group or individual can only be accepted for publication if the same issue carrying the article has a paying advertisement of similar size.

Contributions to ruralfringe@hotmail.com or PO Box 43 Hall ACT 2618.

Advertising rates (per issue)

large (quarter page) \$80
medium (eighth page) \$40
small (three sixteenth page) \$30

Other information

Editor: Jo Hall

Sub-editor: Bob Richardson

Enquiries to the Sub-editor on 0407 071 245 or ruralfringe@hotmail.com

The views expressed in this journal do not necessarily reflect those of the Editor, the Sub-editor or the VHDPA.

Some of the material in this journal may be copyright. Please contact the author or the editor for permission before reproducing articles.



Lonely Hearts



August and September around Hall is known as the lonely hearts month.

“Its bull and ram sale season”

Landmark Yass have all the contacts to buy you the bull or ram of your dreams.

Whether you like em, dark and muscly or white and woolly we have the sires for your breeders.

Ring us with your hearts desire and we will find the right match for you.



Greg Ryan 0428 268 771
Nick Skuse 0425 773 394

HALL PROHIBITION BALL

However, not to be overlooked is the primary reason for hosting the Ball. It's fair to say that we all feel a sense of privilege at the good fortune of living in this wonderful village and district, or at least having an affinity with it in some way. In this busy world of full schedules, constant deadlines, and never-ending commitments, we can lose contact with our neighbours and our friends. The Ball is an opportunity to dress up, step out and reconnect with each other, to indeed celebrate the community where we live. Raising money to enable us to improve the amenity of our own community is a bonus.



HISTORY OF THE HALL BALL

The Hall Ball was originally created by the Hall Rugby Union Football Club in 2009 as an annual fundraiser for the club and a nominated charity. After four years of the Hall Ball being run under the auspices of the Rugby Club, and with the majority of attendance at the Ball being the Hall community, it was decided the baton should pass to the Village of Hall and District Progress Association (the Progress Association). As a long established community organisation, the Progress Association was well placed to build upon the previous success of the Ball, and so continue the 'celebration of community' the Ball has become.



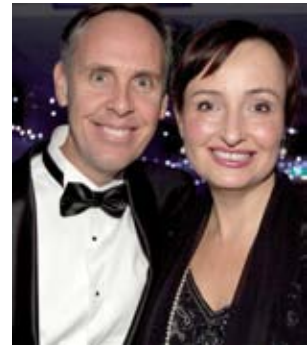
MONEY RAISED

The sale of tickets and donated auction items make up the Ball's income. While the Ball is indeed profitable, it does incur considerable expense. This accounts for the ticket price.

In the last two years, since the Ball has operated under the umbrella of the Progress Association, over \$14,000 has been raised. Approximately half this amount has been donated to the Ball's nominated charities, as well as the Hall Preschool, with the remaining half directed back into the community through the Progress Association, to be used for projects that improve the village and district, and benefit the community. The nominated beneficiary for the 2014 Hall Ball was the Hall Volunteer Rural Fire Brigade.

In previous years, proceeds of the Ball have been donated to the following charities:

- Camp Quality
- The Shepherd Centre
- Starlight Children's Foundation, and
- Prostate Cancer Foundation.



COMMITTEE

This year's Hall Ball Committee, under the sterling stewardship of Shaun O'Connor, included Trudy Mansfield, Angie Hazlehurst, Rod Barnes, Melissa Riches, Stephen Reynolds and Kate Betts.

SPONSORS

The success of this year's Ball is due in very large part to the continued generosity of local businesses and individuals, who donated their time, their expertise and their money. We remain very grateful.

- Dennis Greenwood Energy, Hall
- Pacific Facilities Maintenance, Hall
- Hall Village Motors, Hall
- Endless Beauty, Hall
- The Shearing Shed, Hall
- Grant Roberts
- Poachers Pantry, Hall
- Mick Ashley Artworks
- Kamberra Winery



- Hall Volunteer Rural Fire Brigade
- Canberra Rural Stockfeeds, Hall
- Homeleigh Grove Olives, Hall
- Last Stop Ambledown Brook, Hall

- Yowani Golf Club
- Project Lighting
- POPES Electrical & Data Supplies
- The Hall Rugby Union Club, Hall
- Siren Bar & Restaurant, Gungahlin



5TH ANNUAL BALL
SATURDAY 21 JUNE 2014

HALL PROHIBITION BALL

Sigrah Commercial Furniture
Hall Preschool, Hall
Territory Energy, Hall
Sangrok World Taekwondo
Academy, Palmerston
Seasol Australia
Shaw Vineyard Estate,
Murrumbateman
Craig & Anna Sheargold



Thanks must also go to Mel Riches and Stephen Reynolds for their energy, creativity and service to the Hall Ball of 2014.

We can't conclude without offering our huge and heartfelt appreciation for our fearless captain, Shaun O'Connor. From the Ball's inception, Shaun has worked tirelessly each and every year in the true spirit of community. We can't thank Shaun without acknowledgement that the considerable time and energy he spends organising the Ball, is time spent away from his own family. Thank you Tanya, Layla, Austin and Nellie.

Nick Dahlstrom, Hall Volunteer Rural Fire Brigade
Lincoln Brokerage
Lawrence & Hanson Industrial
Electrical Wholesalers
Lyn and John Anderson
Shaun O'Connor
Hall Premier Store



So, thank you for supporting your annual Ball and sharing an evening with friends and neighbours. Thank you for embracing the 1920s theme and coming resplendent in feather boas, strands of pearls, pinstripes and bowler hats. We so enjoyed celebrating community together, and hope to see you stepping out at the 2015 Hall Ball.

We ask that you support these businesses who support us.

Our sincere thanks also go to:

- our MC David Kilby
- our resident auctioneer Craig Sheargold
- our Preschool teachers Wendy and Cindy, and the artistic children of Hall Preschool Class of 2014
- our local letterpress printer Sam Steggall, for the spectacular invitations, menu cards and table seating chart
- our wonderful bar staff team
- the imposing Constable Stephen Reynolds, for swift extraction of funds for raffle tickets.
- Matty Bolton for crafting unique Hall Fire Buckets - so pleased that our Fire Captain can equally light and extinguish fires in such a fashion
- our able treasurer Rod Barnes
- the Capital Magazine, for their promotion of our community
- our Rural Fringe Team, for helping us tell the Ball story of 2014



6TH ANNUAL BALL
SATURDAY 21 JUNE 2014