

RURAL FRINGE

Journal of the Hall district

VOLUME 19 ISSUE 6

December 2012

Hall Men's Shed

Year in review

by **Kevin Stone**

It's been quite a successful and busy year for our shed, with both membership numbers and the list of completed projects steadily growing.

We've continued to work closely with the school museum volunteers and finished several tasks to enhance the wonderful exhibitions on display. This included the refurbishment of a large display cabinet and the headmaster's chair, lining the school museum office and repairing a large table used to display exhibition items. We've also modified display cases, maintained various items, repaired slate boards and removed an inappropriate wall cabinet and sink. Next year this work will be ongoing, especially if the cakes continue to occasionally appear around morning tea time!!!

Other jobs we've done around Hall include repairing and repainting the bench seating outside the Premier Store, fixing the Hall Pavilion external doors and assembling/helping with the installation of a new large gate at the showgrounds. We've also cleaned up around our shed area and done some landscaping near the Cottage. Bench seats have been installed in a circular paved area, giving members and locals a shady place to sit.

One of our more gratifying jobs is working on desk surrounds for the Kaleen School. We're quite proud to be associated with the project as it is not only community-based, but benefits students with autism.

All this work has been done by our willing volunteers, and we have also had good support from people in the community and some local businesses. This assistance has been greatly



Mike Fitzpatrick, Shed president, assembles some of the work teams



appreciated because it allows us to do things that may have been financially out of our reach.

We introduced having guest speakers and the idea was warmly received. The first topic was hobby electronics and a lot of ideas flowed from that subject, especially for around the house and property. The second one was on the very important issue of men's health, a topic some men find a bit hard to talk about. Once again, it was a very interesting subject and basically highlighted the Hall Men's Shed vision, which is to create an environment supportive of the general wellbeing of males in the Hall and district community.

Next year is shaping up even bigger and better, because as one project finishes, another one is written up on the 'to do' list. So there are plenty of opportunities to participate in new or forgotten hobbies and interests, and to share knowledge and experience with a supportive social network.

We're open Tuesday and Thursday mornings from around 9:30am at the old Hall primary school, with a great barbeque on the first Thursday of each month. New members are always most welcome.



Christmas events inside this issue:

- Catholic Church children's Christmas Party: 2 Dec
- Community Christmas Party in the Park: 8 Dec
- Hall Volunteer Rural Fire Brigade Christmas Party: 8 Dec
- Carnival of Carols: 9 Dec
- Yass Area Landcare Christmas Party: 12 Dec
- Christmas church services

St Michael & All Angels Anglican Church



Christmas Services

Hall residents, friends and visitors are invited to join us to celebrate the joy of Christmas

Sunday 23 December

at **11.00am** – our regular Sunday service of Holy Communion

at **7.00pm** – Service of Lessons & Carols

This service is based on the Service of Lessons & Carols presented each year in King's College Cambridge. Hear the true story of Christmas through short readings and favourite carols in the beautiful candle lit setting of St Michaels.

Tuesday 25 December Christmas Day

at **10.00am** Holy Communion

For more information please ring Beryl on 0408 488526

Christmas in Hall



Carnival of Carols

A very special event will be hosted by the Combined Churches' of Hall and District commencing at **5.30pm** on

Sunday 9th December 2012

at the Old Hall Primary School, Hoskins Street.

Come along and join in the fun of a 'Community Atmosphere' with the Carollers as they wander around the village.

With activities for the whole family including a jumping castle, sausage sizzle, drinks, prayer tent, so bring a picnic blanket and don't forget there will be lots of carol singing.



St Francis Xavier's Christmas

Santa and Mrs Santa will be calling at The School Cottage on **2 December** 7:30pm to 9:00pm



Father Mark Croker will conduct **Christmas eve** Mass at St Francis Xavier's Catholic church at 7:30pm.



Saturday 8 December from 3pm.

Santa will be making an appearance later in the afternoon, with lolly bags for the kids (and big kids) as the Brigade celebrates the holiday season and acknowledges member's contributions throughout the year.

Queries and RSVPs to the Brigade's Secretary, Angus McDonald at:

angus.mcdonald@gmail.com

We look forward to sharing the festive cheer with you.

Hall Community Christmas Party

in the Park

7pm

Saturday 8 December

- Christmas Carols
- Food available



• register your child(ren): Allyson **6230 2646**

Wattle Park Uniting Church

Pastor **Bernie Rogers**



Well, as the weather is finally warming up we know that Christmas is in the air. Wattle Park has enjoyed good attendances during a traditionally “low” numbers season, but despite the cold in the air, the warmth is in our hearts and we look to the future with much enthusiasm.

Our Girl's Brigade has once more remained very strong with some 20–30 girls attending most weeks and the Operation Christmas Child resulted in some 52 boxes for those children who may need our help to celebrate Jesus' birth. Well done to all concerned.

Of course it would be remiss of me to fail to mention our Christmas services this year. Wattle Park prides itself on our Christmas Eve Traditional Carol Service with seven lessons and ten carols to help you worship God in a very happy way (not to mention the traditional three minute sermon – a special Christmas treat for the regulars!!).

Our services most Sundays start at 10.30am, and you are all invited to those as well! But on Christmas Day we meet at 10.00am so that families can get back for those luncheon festivities.

I do hope you can join us at some time over Christmas, Wattle Park is just along the Barton Highway into New South Wales and has a great atmosphere for worship.

Just to summarise:

Sunday 23rd December 10.30am
ADVENT SERVICE.

Monday 24th December 8.00pm
CHRISTMAS EVE CAROL SERVICE

Tuesday 25th December 10.00am
CHRISTMAS DAY FAMILY SERVICE

And a very happy Christmas to all our readers.
many blessings,
Pastor Bernie



Christmas Party

The Yass Area Network of Landcare Groups is holding their Xmas party at 'Redbrow' on the evening of Wednesday 12 December. Starting at 6pm with a wander around the gardens, dinner from 7pm, guest speaker from 8pm. Cost is \$20 per head to cover the costs of catering. The dinner will be a BBQ and salads with wine provided by Mike and Denise McKenzie of 'Nanima Gold' and dessert by Robyn Rowe Chocolates.

Our Guest Speaker, Michael Bligh, will talk about landscaping in a rural setting. Michael specialises in the design of town and country gardens and parklands. A number of these have been included in Australia's Open Garden Scheme. Michael's childhood was spent at Pejar Park, a grazing property near Goulburn, where his mother created one of Australia's finest gardens. He is currently developing his own parkland and garden at Summerhill (Goulburn).

Please RSVP to Melinda Johnson **(02) 6118 6013**,
melinda.johnson@cma.nsw.gov
by Monday 3 December. Payment of the \$20 per head is required prior to the night, details of the direct debit account will be provided upon RSVP.

Redbrow website:

www.canberraguesthouse.com.au



*A unique
BED &
BREAKFAST
Experience*

*Our vintage carriages have come to rest
in picturesque and peaceful surroundings,
and so can you . . .*

(02) 6230 2280



0407 074 633

• Mobile vet - all equipment and tools on site first time, every time

Dr. Olivia James BVSc(hons) MACVSc (Equine Dentistry) CMAVA

olivia@brindabellaequinet.com.au

www.brindabellaequinet.com.au

find us on Facebook 

School Bus Pass reimbursement

now available



Hall Village residents can now apply for a reimbursement of the difference in cost between the Deane's school term bus pass and an equivalent ACTION student bus pass.

Simply log on to the Transport.act.gov.au website. Click on 'MyWay', then 'Students', then 'Reimbursement'. Fill in the details on the form. You can print it off and mail it, take it to an ACT Government shopfront, or submit it online by scanning your receipt and emailing it. Easy.

Our sincere thanks to Michael Lawrence, Manager of Public Transport in the ACT Government, and his team, for their work in making this happen.

Good luck and happy travels.

Angie Hazlehurst

yass valley council
the country the people

Community Transport Connect Bus Service

A bus service, connecting Young, Boorowa and Yass to Canberra, is being piloted.

Community Transport Connect will provide residents living in Young, Boorowa, Yass and smaller villages along the corridor, with regular transport to Canberra. It will provide access to the three major hospitals in Canberra, the Canberra City Jolimont Interchange, connecting to bus, train and taxi services, and the Airport.

Yass Valley residents who wish to use the service must initially register with **Young Community Transport** by phoning **6382 1518**. Subsequent reservations may be made through the **Yass Valley Home Living Support Service Office 6226 4555**.

This pilot will run three times per week, initially for 12 months. If the patronage is very good, the opportunity to attract further funding to continue the service into the future will increase.



School noticeboard - caretaker required

Greg Walsh is moving on (see p22) so we are short a volunteer to update the noticeboard at the school. If your spelling is reasonable and you're willing to take on the responsibility, please call Bob Richardson on 0407 071 245



Hall Pony Club Open day at Hall Show ground on 17 November. A huge roll up on a perfect summer day.

Fundraiser at Gold Creek Station



Dean Crowe and his wife were instrumental in organising the fund raiser for Jim Kroezen's family. Over \$30 000 was raised which will go to a trust account for the education of his children.



THE SHEARING SHED HAIR SALON

Monday to Wednesday	9.00 – 5.30
Thursday	9.00 – 8.00
Friday	9.00 – 5.30
Saturday	8.00 – 1.00

Waxing and Tinting	
Thursday	4.00 – 8.00
Saturday	8.00 – 1.00



Unit 1/2-4
Victoria Street
Hall ACT 2618
6230 2284

X-factor star visits Hall!



Craig Starr, of West Gold Creek, greets and instructs X-Factor celebrity Reece Mastin in preparation for a photo shoot Hollywood style. Gold Creek Station was 'celebrity central' as convoys of PR vehicles drove in to Hall for the magic moment when celebrity Reece Mastin (followed by adoring fans) shored a fleece from a lucky local sheep. The paparazzi clambered over each other to record the event.

"This is exhausting" exclaimed the 17 year old pop-star. Both Reece and his sheep sported an ear tag. Sheep ear tags as fashion items are super cool. You can obtain yours from Craig Starr for a small fee. Reece's five day Live and Lost Tour will donate up to \$10 000 to Midnight Basketball (a national social inclusion program to help youth aged 12 to 18 years).

See Craig and Reece on youTube - search for Reece Mastin day 3.

Bob Richardson, reporting from Gold Creek Station, Hall.

Hall Village routine tree maintenance

The following maintenance activities will be taking place in Hall Village in December 2012

- Pruning of nature strips, showground, park and reserve trees
- Removal of some dead trees

The removal and replacement of some large rot affected trees near the oval and park is being planned for 2013 and details will be circulated in the New Year.

If you have any enquiries about these works please call:

Canberra Connect on 13 22 81 or
Kim De Franceschi on 6207 2504

President's page

Gavin Mansfield

President, Village of Hall & District Progress Association



On behalf of the Committee I wish you all a happy and hearty Christmas and festive season full of family, friends and good cheer. Many of us travel during this period and I urge you all to stay safe. We have had to say goodbye to a number of our fellows this year and we do not want anyone else added to this particular list.

Since the Association's AGM in August we have held monthly meetings. As seven of the 12 Committee members are new, a perhaps larger than usual amount of time so far has been used by the Committee determining how we will operate most effectively during our term, along with identifying and prioritising the always long list of agenda items. We have categorised issues into four groups and appointed Committee members as champions of each group.

Municipal

Thanks entirely to Angie Hazelehurst, a scheme for reimbursement of the difference between student bus fares from Hall and what suburban bus fares are is now available.

In an informal partnership with TAMS to provide plant, equipment and labour, tonnes of crushed road base has been laid in sections of laneways that were eroded and at the entrance to the Pavilion. Negotiations have also commenced with ACT Roads to provide maintenance and regular upkeep of the non bitumen roads, lanes and parks subject to erosion. It seems the high rate of erosion is caused by a number of factors -largely the now high amount of hard covered areas of blocks leading to a higher amount of run off into an archaic stormwater system. This is having diabolical implications for some residents.

Upon our request, in 2013 TAMS will commence an upgrade to all street lighting in the village. All signage within the village, including entrance signs to the village, are also being pursued.

Planning and Development

With the election now out of the way, some of the longer term/bigger ticket items are able to be pursued. Along with the stormwater system, the most significant of these is the future of the school site. The report commissioned some years ago is still relevant and will be the starting point for getting this item firmly on the agenda with the new minister.

The now 11+ year saga that is the Victoria Square development is finally drawing to a close. The developer has complied with almost all of the rectifications required to comply with the original DA and an application to vary the DA to suit the buildings as they currently stand has recently been approved by ACTPLA. The decision to allow the final two townhouses to retain their attic spaces was weighed against the potential to at last finalise the development.

The very large body of work compiled by the Committee some 10–15 years ago, that culminated in the Hall Village Master Plan, has been the basis for ACTPLA's recent creation of the Hall Village Precinct Map and Code which is incorporated in the Territory Plan. It serves to consolidate a number of different development codes. Documentation regarding this process is on the website (www.hall.act.au) with links to the relevant ACTPLA sites for even further reading.

Events

The Events Calendar is on the website along with a veritable feast of other useful and relevant information. All residents of the district should have this site saved to their favourites.

An initiative that is starting to take shape is a youth group. There are currently an exceptional number of children residing in the village and district at the moment and it would be an inexcusable shame for them all to grow up and on without in some cases even meeting one another. Stay tuned – plenty of community involvement will be required with this one.

Treasury

We have commenced a review of the Association's Constitution for the purpose of ensuring that it is useful in practice, accurately reflects the current structure and operations and is legally compliant.

We are in the process of implementing a purchase order system to facilitate the responsibilities and accountabilities of finances, particularly now that there are a number of sub associations with separate bank accounts.

We will commence utilising the services of a contractor to prepare government grant applications with the expectation that this will yield a profit for the association, as otherwise winnable grants slide right by for lack of willing and able people preparing the documentation.

Finally

The Committee meets on the third Wednesday of every month. All meetings are open and any member of the Association is welcome to attend. We work hard to ensure that meetings do not run overtime or get bogged down on only one or a few issues so it is highly recommended that you notify our Secretary (Shaun O'Connor) prior to the meeting to have any issues you wish to discuss added to the meeting agenda.

As always, your own initiatives and involvement, not the Committee's, are key to the preservation, progress and sustainability of our beautiful village, district and community. We look forward to 2013.

'Canberra's early schools and teachers' project

by **Alastair Crombie**

'Friends of the Hall School Museum' hosted a very well attended 'round table' meeting on 8 November – a 'project inception meeting' for the group's 2013 Exhibition on 'Canberra's early schools and teachers'.

By the terms of the grant agreement with ACT Heritage the group will "hold a public exhibition of images, maps and information, telling the stories of Canberra's schools and teachers 'inherited' when the FCT boundary was drawn. The exhibition will create as full a record as possible of the public schools of Canberra a century ago, based on research, site visits, family record, mapping information and other sources". There will also be a digital version of the material as a curriculum resource.

It is proposed that the exhibition be opened on UN World Teacher's Day – to be celebrated in Canberra in the last week of October 2013 – and that particular attention be given to the teachers in these early schools.

Major elements of the exhibition will be:

- (i) A large scale mounted 'orientation' map of the FCT to show precise locations of all the schools.
- (ii) School 'story boards'. We propose at least one storyboard for each of the 14 schools, carrying mapping and survey data, photographs, a brief history and selected stories.
- (iii) Teacher profiles. We propose up to 10 display boards detailing the lives and teaching careers of selected teachers.
- (iv) A short historical overview of schooling in the district before and after the establishment of the FCT.
- (v) A digital version of all of the above, to be mounted for the exhibition and to be made available as a curriculum resource to ACT schools.

The project has been canvassed quite widely, and has already gained some very important recognition and support. This includes:

- Centenary of Canberra, ACT Education and Training Directorate,
- Surveyor General of the ACT, Australian Education Union (ACT),
- Australian National Museum of Education, and the Tuggeranong Schoolhouse Museum. 'Tuggeranong' is one of the early Canberra schools that will be featured in the exhibition.

Anyone interested in assisting with the project should contact the Honorary Curator Phil Robson at: museum@hall.act.au

BETTER BLADES

Sharpening Service

• Knives • Scissors • Electric hedge trimmers
• Clipper blades - steel/ceramic

<p>Sales and service of Oster®, Thrive® Wahl®, Andis® and Sheer Magic® blades</p>	<p>contact: 0415 483 089 mobile or 02 6230 2440 phone/fax post to: PO Box 250 HALL ACT 2618 drop off: 21 Gladstone Street, HALL ACT email to: bblades7@bigpond.com</p>
---	--

DARRALEE QUARRY



Darralee Quarry has recently been re-opened. It was one of the RTA's main sources of road base for many years.

Supply and/or delivery of Road Base to suit gravel roads

Contact Paul on (02) 4845 8288 or paulwyer@fertsread.com

Galloway beef

*For sale, directly to your door
Now also available at Epic Farmers Market
two Saturdays a month*

Sold by the side (approx 60 kg), or in 15kg boxes of assorted cuts



Minto Galloways Natural, pasture raised beef.

Independent US and Canadian tests found that Galloway Beef is:

- naturally lean, but well marbled, tender and full of flavour
- low in saturated fat, but with high levels of Omega-3
- contains no growth hormones or antibiotics, unlike most feed lot beef available through retail outlets today.

Gently reared on pasture, supplemented only when needed with grain, stress free Minto Galloway beef tastes great as well as being good for you.

NSW Food Authority Ref No. 33313 for your confidence
ACT Food Business number 0931/07

To order, or for more information, contact

Greg & Chris Stuart

phone: 6230 2536 email: fenris1@bigpond.com

Hall Volunteer Rural Fire Brigade

Melissa Riches President

Ho, Ho, Ho and our eyes to the daily Fire Rating we go . . .

As we enter the Yuletide season as volunteer firefighters we are always conscious of keeping an eye on the prevailing weather conditions to ensure it is not supporting a heightened fire alert. The modern fire rating meters that we see on the side of the road warning us of low-moderate/high/very high/severe/extreme/catastrophic bushfire conditions are based on the work of local scientist Alan McArthur and take into account wind speed, relative humidity levels, air temperature, dryness of the grass or curing as well as a soil drought factor. Modified to include the catastrophic rating after the 2003 firestorm, the daily fire ratings are there to inform you of the fire behaviour you may expect if a fire started on that day.

Hall Volunteer Rural Fire Brigade, as well as our 'cousin' brigades over the border will certainly be paying close attention to these ratings as we wait for the jolly red man to arrive. We would recommend you do the same and stay vigilant to alerts over the holiday period in regard to enacting your Bushfire Survival Plan. This includes identifying any new fire hazards in and around your area.



One hazard that I am happy to dispel is the threat of the humble string of Christmas lights on a drying Xmas pine. Despite the warning you may hear about hundreds of such fires over the festive period, the MythBusters team recently tested the likelihood only to find the following:

Today's Christmas tree lights come standard with safety fuses in the plugs to ensure overzealous decorators don't overwhelm the electrical circuits in individual wall sockets. The MythBusters loaded up a Christmas tree with the manufacturer's recommended five strands, left it overnight and returned to find no sign of fire.

To circumvent the safety precautions they then dressed an extremely dry Christmas tree in 2,500 lights — five times as many as before — by using a number of extension cords and separate wall outlets. After just 40 minutes, the ambient temperature around the tree reached 110 degrees Celsius. That sizzling heat would certainly get Santa sweating, but it wasn't enough to ignite the tree.

The busted myth showed that lights alone aren't a fire hazard, but before we overrun the electricity grid, we should always be conscious of loadings on household circuits. And if like me you are a lover of Xmas light displays and decorated trees, you are welcome to view the Brigade's own Xmas tree at our Shed in Loftus Street.

So on behalf of the Hall Volunteer Rural Fire Brigade I would like to wish you and your family a very Merry Christmas and Happy New Year!

FERTSPREAD



Independent fertiliser
dealers and spreading
contractors

Hume Hwy, GUNNING, NSW



**Super, Lime, Dolomite, Gypsum,
Agri-Ash, Manures, etc**

- Sales
- Delivery
- Spreading
- GPS Mapping
- Soil Testing



ph: **1800 500 184**

paulwyer@fertspread.com



www.fertspread.com



DOG TRAP DESIGN

GARDEN DESIGN CONSULTANT

BEAUTIFUL GARDENS

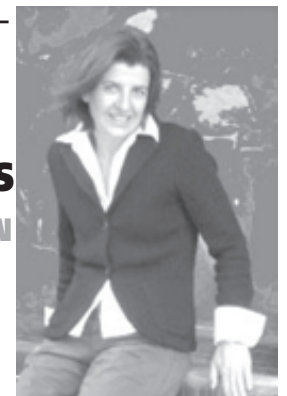
by **DOG TRAP DESIGN**

designer

LISA KAVENEY

email: lkaveney@dogtrapdesign.com.au

web: www.dogtrapdesign.com.au



0428 275 701

6242 4172

how Hall Village saved its Post Office

Post Office reporter **Bob Richardson**

Some residents may not be aware that our Hall Post Office was recently under threat of closure by Australia Post. Some alert Hall citizens picked up signals that Australia Post was being groomed for privatization along with a treasure trove of other publicly owned utilities. Profitable businesses in Australia Post were to be flogged off in preparation for a media campaign and sale.



Hall Post Office and Store, 1910

Nothing learnt from the 2008 melt down or 30 years of evidence exposing the mythical gains of rationalist economics.

Hall village is still smarting from our school closure, departure of our doctor's surgery, withdrawal of petrol from our garage and again we were to be collateral damage with the possible closure of our Post Office.

Australia Post generates hundreds of millions of dollars in profit annually which goes to the public purse. \$281 million in 2011/12. Annual revenue is \$5 billion and growing. In October 2012 Australia Post announced an investment of \$2 billion in a 'Future Ready Strategy'. This followed a \$400 million buy out of 'Star Track' from a floundering Qantas.

Alert citizens pre-emptively involved Andrew Leigh, Member for Fraser and 'communities champion'. The cat was out of the bag. Australia Post was obliged to conduct a community survey. The result was overwhelming resident support to retain our Hall Post Office as is and documentation from Australia Post that there would be no stealth attack (at this time).



Trudy at the Hall Post Office, 2012

Hall Post Office: a brief history

Hall's Post Office history was shaped by the rivalry between Hall and Ginninderra (now, more or less, Gold Creek), which was originally more established than Hall with a general store, school, police station and Roman Catholic church. A Telegraph Office opened in Ginninderra in 1879, not far from their Post Office. They were going to combine the two until it was realised the Telegraph Master was only 15 years old, but a year later in 1882, when George Harcourt resigned as Postmaster, the boy – Mr F Coles – was made Post and Telegraph Master. In the early 1900s Hall campaigned for the right to the Post Office because it was now more the centre of business than Ginninderra, with two general stores, hotel, coachbuilder, blacksmith, butcher, shoemaker, saddler and dairy. But Ginninderra Post Office didn't close until 1962 and the unofficial Post Office at Hall became the only Post Office, with Charles W Southwell as the first Postmaster.

From Memories of Hall by Leon R Smith

Museum

Musings

Phil Robson Honorary Curator



Thanks to the continued work by our dedicated volunteer team on the conservation of the collection and its display, the Hall School Museum is looking fabulous. In the past few weeks focus has been on the collection of early school books and a workshop, presented by Kim Morris from Art and Archival, was held showing techniques in the repair and protection of these important items.

Planning and collecting material for the "Hall and District 1913" exhibition has commenced. We are planning to re-create the businesses, homes, community and social activities that took place in Victoria Street in 1913. Interesting material has come forward so far but we are always on the lookout for material that has a link to Hall from that era or earlier. Please contact me at email museum@hall.act.au or call me on 0408259946 if you have anything in your cupboards or sheds that you would like to loan or donate for the displays.

A Project Inception Meeting was held at the Museum to gather all interested parties to discuss the "Early Canberra Schools" project that we received funding for from ACT Heritage. A summary of the meeting is elsewhere in this edition of the *Fringe*.

The new brochure promoting the Hall School Museum has been circulated through the Canberra Tourism network. Further promotion will occur in March 2013 with a display of Hall district businesses, produce and the village's history at the Canberra Information Centre on Northbourne Avenue.

Donations of interesting items continue to arrive at the Museum's heritage collection, "Memory Lane" as it has been fondly referred to. The latest unusual item is a clockwork fly trap manufactured in the 1900's by a Japanese company. It is an ingenious mechanical device. Many thanks to Pedro Corrigan for this addition to the collection. I also wish to thank Merrilee Bogar for the Gould Bird League badges and certificates and other items from her time at Hall School that she has kindly donated to the Museum.

Additions to our volunteer group are Joan and Jack Christie. Joan, together with her sisters visited the Museum last month. Joan is a granddaughter of George and Ada Kinlyside (nee Hollingsworth). Both these families were major contributors to early life of Hall Village. The family have produced a family history, a copy of which they donated to the Museum. The family have a fine collection of material connected with these important early Hall families.

A recent visitor to the School Museum was Mary Reeve. Mary was a pupil at the school in 1954. She

was one of the children from Dutch families that came to live in Hall at that time. On walking into the old classroom she commented that it was just the same as she remembered it. She has followed up the visit with correspondence containing recollections of her time at the school and living at Hall. She also made the following comment:

"On the 4th of November, it had been 59 years since I set foot in the old school. It was the best feeling seeing it all again and the interest shown by the helpers was overwhelming. (Just lovely)".

Speaking of visitors, the Museum Group will be hosting members of the North Canberra Probus Club on 19 November and a group from Canberra Tourism on 4 December.



I visited the Bombala Engine Show recently and there was an item on display that needed identification. I believe it is one of a pair. It appears to hold something in the clamp at the top while resting the bottom part on top of the ring. The support is in the design of a lion with clawed feet. Can anyone help with its identification and use?

The Hall Museum webpages are available on the Hall Village website www.hall.act.au. The webpages contain information on the Museum, news items, photo gallery and how to become a "Friend of Hall School Museum". I will be adding photos of the museum collection to the gallery in the forthcoming weeks.

If you would like to join our team of conservation volunteers that meets on Thursday mornings please come along from 9am until 12noon at the school.

Hall Village Motors

Mon-Fri
7:30am-5:30pm
Saturday
8:00am-2:00pm

phone: 6230 2288

Proprietors: Tony & Amy Hazelton
fax: 6241 7281



Canberra Country Music Festival

by **Hugh Watson**



The Canberra Country Music Festival 2012 was held at Hall Village Show Grounds 16 –18 November.

The Festival was established to promote, showcase and grow Country Music (across all its sub-genres) in Australia's national capital and surrounding regions – the largest inland market in Australia comprising over half a million people.

As the last festival of the year on the country music event calendar, the Canberra Country Music Festival also has the highest level of new recording launches as performers gear up for Tamworth in the New Year.

The Festival also raises funds for local non-profit community organisations as well as fostering country music in the heart of the nation.



A great location and a great set-up, but unfortunately not enough people. West Texas Crude played on both Saturday and Sunday – it was great to see the Robsons there (Yvonne is our most long-standing fan; or should I say groupie!).



Matthew and I were delighted to win the award for “Best Regional Country Rock Song” for our song: “Doesn't anybody care about the country anymore.”

NEED POWER TO YOUR LAND?

NETWORK POWER & POLES

Accredited Service Provider Level 1 and Level 2.

Shaun 0427 363 747 Andrew 0422087447

admin@networkpp.com.au



Straight from the Horses Mouth

contributed by the **Canberra Equine Hospital**

When was the last time you went to a dentist? A few months? A few years? What about your dog or cat? Did you know your horse should also visit a dentist?



Why do horses need dentists? We have changed the way horses eat, through domestication and farming. Most horses are now eating improved pastures, hays and commercial foods. This is much changed from grazing hardy native plants and having to grind these plant fibres down. This new diet is making the horse grind less for every mouthful of food, creating sharper and longer teeth edges, which can lead to damaged mouths, tongues and dental disease.

Dental examinations should begin at the first "wellness" exam for your newborn foal. Your veterinarian will perform a brief examination to check your foal's bite. Identifying an abnormal bite at an early age will allow you to provide the appropriate care to minimize the impact of any defects from affecting the quality of your horse's life.

A common abnormality seen in dogs is retained baby teeth. This occurs when the permanent tooth bud does not grow immediately beneath the baby tooth. If a retained tooth causes the permanent tooth to erupt in an abnormal position or causes other types of problems, it should be extracted. This can also occur in horses and should be checked regularly.

As your horse grows, bi-annual dental examinations are normal. By the age of three years, 80% of dogs have signs of gum disease include yellow and brown buildup of tartar along the gumline, red inflamed gums and persistent bad breath. The same is true of horses, 20% of horses only need floating (smoothing) of sharp points, while 80% show other signs of dental disease, just like dogs and humans.

Floating involves removing sharp points and edges to decrease pain, as well as to realign the mouth to help with chewing. These sharp edges cause two problems. First, they interfere with your horse's ability to chew

their food correctly, which can show up as weight loss over time. Another problem is when gums rub against sharp edges with a bit, a horse that previously had been fine will start tossing their head and fighting the bit.

Loose teeth are another problem of older horses. A horse's tooth starts out three to four inches long and slowly erupts out of the gum over time. As a horse chews it is slowly grinding down the erupted portion of the tooth. Eventually the tooth erupts fully, sometime between the ages of 20 and 30 and starts to come loose.

Loose teeth cause inflammation and pain, which can cause huge weight loss in your horses. Since a loose tooth is not any good at chewing, it is appropriate to remove this loose tooth.

And finally only allow a licensed veterinarian to administer a sedative or analgesic, to diagnose dental problems in your horse and to develop and implement the treatment plan.

Looking for a great horse vet?

- We just love horses
- Around the clock care
- We travel to you
- 'State of the art' hospital
- From the routine to the complex diagnosis and surgery - we do the lot

CANBERRA EQUINE HOSPITAL

www.canberraequinehospital.com.au
email: equine@canberravet.com.au

6241 8888

Corner of Barton and Federal highways, Lyneham



HALL STOCK FEEDS

WHOLESALE AND RETAIL
PRODUCE MERCHANTS

FOR ALL YOUR PRODUCE NEEDS

All Animal and Birdseed
Fencing Materials
Irrigation Equipment
Steel strainers
Treated Pine Products

8.00 am – 5.30 pm weekdays
8.30 am – 12.30 pm Saturday

6230 2631 6230 2644

GLADSTONE STREET, HALL ACT 2618

More St Michael's History

by Neil Manton

We were delighted to come home from a holiday and find a card from Margaret and Tony Morris, and even more delighted to find enclosed some documents they found in an old filing cabinet at Hall School concerning St. Michael's and All Angels Church.

There were receipts from the Department of the Interior for Land Rent – 5 shillings for the period ending 31 March 1960! And a bill for electricity in 1955 of 1 pound 1 shilling. Those were the days my friends. And there were the original envelopes with the 3 penny stamp featuring the young queen. An interesting signature on the electricity receipt was of the meter reader, one Gribble, a familiar name in Hall history. But I wonder which one it was?

Also included was an invoice dated 9 August 1954 for the supply of most of the church furniture from Ernest Mills and Sons Pty Ltd of Harrington Street, Sydney; seats, frontals, communion rail, sanctuary chair, stools and bronze memorial plates. Total cost 551 pounds 10 shillings plus charges of 35 pounds for delivery by road.

All documents are now in the Church Archives which are available for inspection by appointment with me – or around church services at 11.00am each Sunday (all welcome!).



Landcare



Land Care group, all volunteers, maintain and carry out weed control at Hall Cemetery in October.

Canberra Medieval Tournament and Fair 2012

Step back in time, immerse yourself in the rich atmosphere of the medieval times.

Follow the aroma and introduce your taste buds to medieval fare. Admire the handcrafted, vivid costuming or peruse the markets stalls brimming with various wares, art, jewellery, weapons, armour and shields all for purchase.

Cheer on your favourite competitor in the Skill at Arms, lose yourself in the charge of thundering hooves....noble steed and rider hurtling at breakneck speed to meet the challenge...at the point of a lance. Which knight will prove most worthy?

Or would you rather test your archery skills by shooting a knight?



16th century Italian Ciana da Lucca and 15th Century Persian Isabella Di Millefiore



This was the Canberra Medieval Tournament & Fair 2012, an event held over two days; 27 and 28 October at Hall Polocrosse grounds, in what has become an annual event.

Participation from individuals and groups which showcase the medieval period is welcome for 2013. If you are an interested stall holder, bard, musician, dramatic act, potter, blacksmith or a medieval culinary artist, please get in touch with Declan Kane or Michael Hunter; see www.canberramedievaltournamentandfair.com or email khtm@bigpond.com



CANBERRA
ARWAYS
PTY LTD

FOR RELIABLE & EFFICIENT
 MOTOR VEHICLE TRANSPORT

CANBERRA – SYDNEY
 CANBERRA – MELBOURNE

ALSO PICK-UP & DELIVERY ALL OTHER CAPITAL CITIES

For enquiries telephone **6242 7310** FACSIMILE 6242 7320
 3 CHENEY PL, MITCHELL

Riverview Homestead
B&B

1173 Wallaroo Road, HALL

“Relax with nature, in country comfort”

Your hosts:
Les & Robyn Beresford

www.riverviewhomestead.com.au

phone: 6230 2637 or 0417 463 601 email: lesrobdj@bigpond.net.au

Ernie's takeaways relocate!

by **one of Ernie's mates**

Leave your iPods and ear pieces at home and take a walk around the Village bush walking trail, listening to the various sounds and observing nature at its best.

There are many fascinating bird calls and a variety of animal, wildflower and vegetation changes over our four seasons.

When the path was designed, care was taken to keep well away from natural habitats like ant's nests and their foraging trails.

Interestingly the ants have since decided that the walking path is a resource that suits them and have moved their nests to the path. Apparently it is much easier to use the path as a foraging trail than to clear their own through the grass and other obstacles.



As an aside I once heard an expert on ants explain that the foraging ant's legs are much longer than those confined to the nest and egg protection. This allows the foragers to travel far more quickly and widely as they search for food.

Another user of the trail is our village's itinerant wanderer 'Ernie' (christened by some) the Echidna. He can sometimes be seen waddling the path or through the long grass beside, selecting his chosen snack of ants. If he is not obvious you can see evidence of his visit by the scratching in large ant beds or small conical holes in the soil where he has poked his nose for a special treat.

There was consternation amongst some village residents about six weeks ago as no one had seen Ernie this season, however he is now back and up to his old tricks.

He is a favourite of many villagers as he visits their gardens in his wanderings, digging holes or moving large object like rocks as he searches for delicacies. If you see him crossing the road or a lane, please take the time to let him pass through. It would be a village tragedy if he were skittled by a non caring driver.

So take time to care for our native animals, meander along our walking path and relieve your daily tensions by enjoying listening to and watching the natural beauty of our unique village.

Enjoy what you have while you can.



HEWATT

Civil Engineering	Rural, Residential
Design & Construct	House Sites
Earthworks	Driveways
Water Cartage	Dams

phone: **6227 5694**
email: **info@hewatt.com.au**
website: **www.hewatt.com.au**

MAJURA PLUMBING

Mathew Patch
Owner/Operator

Plumbing Draining Gasfitting

• 24x7 service • No job too small

0407 483 510
jmpatch@bigpond.com

ACT Lic No: 2007471
NSW Lic No: 235525C

Hall Bushrangers

by **Andrew Dunbar**

Hall Cricket and Oztag roundup: The King Browns roll on.

With the footy season ending on a high for the Hall Bushrangers, attentions have now turned to summer, and the cricket season ahead. The King Brown Bushrangers had a very slow campaign last year, failing to amass a single win in their opening season of the Canberra Sunday Social league. Going into their sophomore season it was always going to be difficult but this year has seen the side come out of the blocks with two wins from two games.

Round 1 of the competition started where the last left off, with the Bushrangers continuing their woeful form at the coin toss. Sent into the field again, for what seemed like the thousandth time, there was a different swagger in their step. The side entered the field dull of confidence and it didn't take long to show why. Having restricted the opposition to a mere 20 runs from the first eight overs, a wicket was due. Pete McCabe took the first wicket of the season with some rather unorthodox pace attack that unseated the opening batsmen, and their line up, ultimately finishing with 3/17. Joel Williams helped to anchor the pace attack with McCabe and the King Browns finished up bowling



the opposition out for a mere 90 runs which the King Browns accounted for not long after drinks.

Round two saw the King Brown Bushrangers lose yet another toss, but with a win under their belt, their confidence would not be wavered. In the first over the Bushrangers were unlucky not to claim their first scalp, with a contentious decision going against the side, ultimately coming back to hurt them, with the batsman falling just shy of a century. With TrimsMob heading into drinks at 1/102 things were looking like a long day in the field again for the Bushrangers. TrimsMob were restricted to 7/236 after five wickets in the last five overs providing the Bushrangers with some optimism.

Thanks to the not so graceful but thoroughly entertaining batting by Captain Craig Scott (89), and Forrest Partdige (45), the Bushrangers were able to chase down one of the largest totals they have faced. Scott amassed a score well into the eighties despite not running between wickets once, except to regain the strike. The second win of the season saw a real team effort with all players making a valuable contribution.

The SmokeFree ACT Hall Bushrangers Oztag side has started to compete in the Kippax ACT Oztag competition, taking place on Tuesday nights. With the season well underway the side have been struggling against some of the stronger sides in the competition. Improvement has been coming at a rapid pace and they have played themselves back into a quite a few games as the siren approached. The side is certainly looking better prepared for the second half of the season, where with a little more practice at the non-compact game they hope to make a good run towards the finals.

If you are interested in playing for either side please don't hesitate to contact the club.

Cricket: Craig 0410 023 830

Oztag: Daniel 0405 485 219

Scoreboard proposal - have your say

The Hall Bushrangers Rugby Union Club is seeking the approval of the Hall Community to install a secure electronic score board with the following dimensions:

3100mm long x 1500mm high x 110mm deep.

The scoreboard would be located on the northern end of the rugby field to the right of the posts, over the dead ball line (see hall.act.au for map).

The score board will be mounted on an aluminium stand built by Hall Metal Fabrications with a lockable cover. On the rear of the board will be a 'What's on at the Hall Sports Ground' notice space. The Hall Hornets Rugby league and any other sporting associations would also be able to use this scoreboard.

Any comments, objections or questions can be directed to **Nigel Page** – President of the Hall Rugby Club.

email: pagebiddle@grapevine.com.au

mobile: **0414 712 980**

LIDO's FENCING and Water Tanks

Domestic, Rural & Commercial,
Colorbond, Palings, Chain wire,
Pool fencing, Glass fencing

JAMES 25 years experience
Free quotes

0408 645 832 **6262 4065**

Bobcat hire
Post boring
Trenching
Truck hire

'Sons of the Somme'

accepted into the National Collection

A song from local Hall band West Texas Crude has been accepted into the National Collection at the Australian War Memorial.

The lyrics for the song, *Sons of the Somme*, were written by Hugh Watson and the music by Matthew Herbert and it is on their recently released second album *Take Your Chances*. It was based on a visit by Hugh and his wife Ros to the Somme in 2010 and the war diary of Ros's grandfather, Lieutenant William Brydie, First AIF. Will Brydie was in the thick of the fighting and his diary is also in the National Collection.



THE WAR DIARIES
OF
LIEUTENANT WILLIAM BRYDIE
1st A.I.F.

The lyrics to the song are:

*Thy will be done oh Lord
Some day we'll understand
Cries out from a gravestone
Near Villers Bretonneux
Sleep on dear son in that far off grave
Your life you nobly gave
From another grieving family
Among the countless names.*

*As I pause among the gravestones
Near Villers Bretonneux
It's hard for me to understand
To know what these men knew
But a diary that's been handed down
Tells of what went on
From someone in our family
A son of the Somme.*

*Son, sons of the Somme
Son, sons of the Somme
Son, sons of the Somme
Son, sons of the Somme*

*He tells of horrors that he saw
But in a calm and honest way
Artillery, gas and snipers
And rain day after day
Of Fritz and what he thought
Of the brave men that he faced
And the brave friends that he lost
each day
Some gone without a trace.*

*When they went over the top
It was called a stunt
Some were good and some were bad
Many men were lost
And back at home the news was heard
And a gentle epitaph was penned
May the heavenly winds blow softly
Over the sweet and hallowed spot.*

Son, sons of the Somme ...

*Each gravestone tells a sad sad tale
Of loss so heavily borne
Voices cry from a far off time
Still living, still loving, still yours
Though absent we can still see thee
smile
You can hear the parents say
Sleep on dear son in that far off grave
Your life you nobly gave.*

Son, sons of the Somme ...

TERRITORY ENERGY
ELECTRICAL DIVISION
ELECTRICAL MAINTENANCE
6230 9800
ACCREDITED SERVICE PROVIDER

It is every little girl's dream to be

The fairy on a Christmas tree.



A wand in her hand,
A smile on her face.

And a tree in a most peculiar place.

Spike Milligan



— creating delicious stories —

Poachers Pantry
Smokehouse Café

Situated between Hall and Murrumbateman.
Traditional smoked meat, seasonal flavours and cool climate wine.

Café Brunch: Sat & Sun, 10am
Lunch: Fri, Sat & Sun, 12pm to 3pm
Dinner: Fri & Sat from 6pm

Cellar door, Farm shop & coffee 7 days, 10am to 5pm
02 6230 2487 poacherspantry.com.au

Outdoor Kitchen

by Lisa Walmsley

Why have outdoor kitchens become a must have space in our gardens? Has everyone forgotten so quickly the bricked in BBQ from the 60's and 70's that still adorns many gardens I visit. By now they are falling down, have not been used for many years and are a complete eye sore.

Gorgeous landscapes visually destroyed by poorly planned grill islands, view blocking pizza ovens and rows of unnecessary appliances, not to mention the retractable television.

It's very easy to recognise a bad kitchen, having said that it does not mean I know how to design a good one. After some research this is what the experts seem to advise.

1 Plan, Plan, Plan: Often they are an afterthought, they get shoved into a blank space that can't house anything else and many times they have to be constructed on a limited budget. Many of the experts say that poor planning explains most of the badly executed outdoor kitchens.



2 Work as a team: Include everyone in the design, the homeowner, landscape designer, builder, electrician and appliance person. Installing an outdoor kitchen is very complicated, layouts, utilities, countertop choices. All too often the entire project is left to a single designer or builder. A conversation with the entire household is useful, quiz everyone with questions such as: 'How do you see yourself using the space?' Build a brief, make a list and talk through what they think they will do with it. Even simple choices like the size of a sink for this area can be a complex decision.

3 Get appliance knowledge: Improvements in appliance features change dramatically from year to year. Make sure you, or somebody who is helping you, have a firm grasp of what's available. If you want to keep a fridge outside in the winter make sure you understand what is required to make sure you don't have to replace it annually.

4 Match your 'Look': Don't forget you have an existing building, your house. The materials you use should be dictated by the home and its surroundings. The best way to blend in a new kitchen is to build it with the same trim and stone that are used on the house and in the landscape. And beware of inexpensive solutions. Different materials stick out like a sore thumb and can make the space look cheap and nasty.

5 Proportion the space: The size of your outdoor kitchen should match proportionally your house. If the kitchen is very small, it can look like a pimple on a pumpkin and the opposite can also be a problem. If the transitioning (from the home to the outdoor kitchen) is not done well, it will look like a beached whale. Smart designers incorporate numerous structural elements to make a kitchen fit into its surroundings, including pergolas, screens, and plantings.

6 How does it flow: Make sure the design makes sense, make sure that people at the pool do not have to walk past a hot grill to get a cold drink. Figure out where you will prep food, where you'll put food after you take it off the grill, and where to put a dirty pots. Flow should fit the individual client. Who will be cooking? Do they want to be apart or in the centre of things?

7 Light up the site: The single biggest mistake people make is to not have enough lights. It's hard to see food cooking on a grill at night, so you need bright task lighting. It's also hard, and

unpleasant, to eat food if you can't see it. Kitchen areas that are also dining areas should have ambient and ornamental as well as task lighting. Make sure it's all adjustable and dimmable.

8 How Much Is Too Much?: There's an outdoor appliance for every culinary fetish, warming drawer, wine tap, dishwasher. Deciding what to buy is the 64 thousand dollar question. Keep it simple, when you're not using it, you end up wanting it to go away. Think about the frequency, if you're only going to cook in something once a year, then you probably shouldn't bother.

9 It's Fun to cook outside: Part of the joy of outdoor cooking is doing things you can't do indoors. Think about what you'll need to sear steaks over incredibly high heat, smoke slabs of ribs for hours and hours, or cook pizzas in a blazing-hot oven — all tasks well-suited to outdoor kitchens.

10 It's Not About the Cooking: However, the big thing about today's outdoor kitchen is how the spaces can be crafted for outdoor living. All the boys can come around for the footy without interrupting the household and watch television in your outdoor kitchen, pull down weather shades, and turn on a heater or light the fire if it gets cold. Just as the indoor kitchen is a place to hang out, so now too is the outdoor kitchen.

Rotary news

Donation to Canberra Hospital Neonatal Intensive Care Unit

The Rotary Club of Hall was approached by Annabell Fenton, nee Pearson, who grew up in Hall, after she had an extended stay in The Canberra Hospital Neonatal Intensive Care Unit (NICU) following the birth of her son Max. The Club's Community Service Director, Chris Edwards decided to investigate how the Club could help and agreed to allocate some funding to make the new NICU ward more comfortable.

The new NICU was opened in September 2012 and is very impressive in so many aspects. Not only is it three times the size of the old one, but instead of one large room filled with babies and equipment, with parents, visitors and staff all clambering for space; the new NICU introduces a new level of quietness and privacy. However no seating was provided for parents or visitors in the new NICU. The furniture and other equipment purchased by the Royal Canberra Hospital has added to the comfort of the families and has already helped to give them time out space. "Without the Rotary Club of Hall's donation, parents and visitors would have been sitting on the window sills, and also with the furniture Hall Rotary supplied in the Quiet Room, it will make that terrible situation just that little bit better," explained Zsuzsoka Kecskes, the Clinical Director of the NICU.



left to right: Alison Moore – Clinical Nurse Consultant NICU, Zsuzsoka Kecskes – Clinical Director NICU, Chris Edwards – Rotary Club of Hall Community Director, sitting on chairs donated for the hallway ends

Hosting a Group Study Exchange Team from Mississippi

For a few days at the end of October the Rotary Club of Hall hosted a Group Study Exchange (GSE) Team from Mississippi. The team was in Australia for a month and was hosted by Rotary Clubs throughout SE NSW. The GSE program is designed to provide a unique cultural and vocational exchange opportunity for young business and professional men and women between the ages of 25 and 40 in the initial years of their professional life. During

their month in Australia the team studied our way of life with particular emphasis on observing their own vocations as practiced here, giving them an opportunity to develop personal and professional relationships, and exchange ideas.

Whilst in Canberra they stayed with Hall Rotarians and the Club arranged visits to local businesses, government offices and community organisations to allow them to exchange ideas in their professions. They also visited the Tidbinbilla Nature Reserve where they were lucky enough to see a red-bellied black snake and duck billed platypus in the wild. They were given a private tour of the War Memorial and for a little bit of relaxation on the last day some of the team went kayaking on Lake Burley Griffin and mountain bike riding on the tracks on Black Mountain. The exchange has allowed Hall Rotarians and the visitors to develop understanding of each others' cultures and build long-term friendships.

Matt Goddard and Katie Frantes setting out for a mountain bike ride with Rotarian Bill Watson on their last day in Canberra



For more information about these stories and other projects of the Rotary Club of Hall please visit the Hall Club website <http://www.hallrotary.org.au>.



Lincoln Partners work with small to medium sized businesses and individuals to minimise tax, reduce risk and maximise their growth potential.

Lincoln Partners specialise in:

- Business and financial structuring
- Taxation compliance and advice
- Cashflow analysis and budgeting
- Business sales and purchases
- Financial strategies and analysis

principal: **John Howlett**

phone: **02 6100 4732**

fax: **02 6230 9474**

mobile: **0411 283746**

email: **john@lpcanberra.com.au**

postal address: **PO Box 282, GUNGAHLIN, ACT 2912**

street address: **3/10 Victoria Street, HALL, ACT 2618**



Remembrance Day at Hall

11 November 2012



photo: Bob Richardson

A lone piper, the setting sun, the rustle of leaves in the trees above, the chatter of friends and neighbours waiting for the ceremony to begin.

The ceremony, ably conducted by Denis Greenwood and Bill Pearson, was again well supported and and much appreciated by those who gathered at the Memorial Grove - carefully spruced up for the occasion.

After a welcome from Rotary President Brian Goldstraw, Col Ian Ahearn gave the *Address of Armistice Day* – and reminded us of the origins of our 'Remembrance Day'. Prayers were lead by Pastor Bernie Rodgers and Rev Trish Stuart-Smith of St Michael and All Angels before wreaths were laid.

Wreaths were laid by representatives from the Village of Hall and District Progress Association, the Rotary Club of Hall and the Hall Rural Bush Fire Brigade. A number of others present added posies and wreaths, including Joan Christie, a descendant of the Kinlyside family.

Alastair Crombie then introduced the song *Uncle Clyde*, written by Australia singer/song-writer Denis Kevans as a tribute to his great uncle, Clyde Hollingsworth, who died in action at Bullecourt in 1917. Clyde was also great uncle to Joan Christie. The song was especially recorded for this ceremony by folk singer Sonia Bennett. Many thanks are due to Sonia, and to Denis' daughter Sophia, for making it possible to include the song in our ceremony.

The ceremony concluded in the usual way with the Last Post, a minutes silence, followed by the 'Rouse' and the national anthem – lead with style by Ralph Southwell. By tradition, the ceremony was followed by an orderly retreat to the Wood Duck Inn.

Congratulations and thanks to the Rotary Club of Hall for making this such a valued part of the annual Hall calendar.



Endless Beauty

Shop 3, 2 Victoria Street, Hall

OPEN MONDAY TO SATURDAY

Facials	Manicures	Pedicures
Waxing	Tinting	Eyelash Extensions
Spray Tanning	Makeup	Eyelash Perming
	Solarium	

Relaxation Massage	Hot Rock Massage
Remedial Massage	Trigger Point Therapy
Lymphatic Drainage	Sports Massage
Pamper Packages	Skin Analysis
Body Treatments	Gift Vouchers

ENDLESS HEAVEN

- Enjoy an endlessly beautiful facial entwined in a full body relaxation massage

2 hours of pure bliss for only \$130

BRIGHTEN UP FOR WINTER

- Pop in for a Maintenance Quick fix treatment facial, a pure collagen eye treatment, an eyelash tint, eyebrow tint and an eyebrow wax.

1 hour 15 mins \$95

phone: (02) 6230 9703
after hours: 0433 596 014

An option you should consider

W.J. Gibbs & Co Pty Ltd

Sell your cattle at Canberra Oaks Estate Saleyards

"Weigh it up"

We pre-weigh all the cattle - the best option for vendors and purchasers.

"Compare our fees"

You definitely will find savings in yard dues, handling fees and commissions compared to most major operators.

"What does it cost in transport to get to major centres?"

Does it really add up?"

Double handling in many cases for smaller numbers

Time off feed and water = weight loss

Longer time on trucks = stress

All this costs you money

You could have your cattle to us and on water within the hour.

We make it our business to get you the best buying support for your livestock by keeping in touch with market trends.

We have regular coastal and local butcher support for young cattle and we are one of the closest markets to a significant cow and bull processing works.

Regular attendees to our auctions are local re-stockers and feedlot buyers.



Greg Darmody 0412 677 641

Brad Jones 0400 166 595

David Reid 0429 383 500

Office 02 6299 2255
52 Monaro St Queanbeyan
NSW 2620

Wallaroo Rural Fire Brigade

Rod Roberts President

A reminder to our local community that it is time to finish all the tasks required for getting ready for this year's fire season. After the last two years of good rains and no significant threat, the cycle has started to return to a more normal weather pattern. The grasses have already started to dry out. If you still have fire breaks to mow, early morning is the best time when the moisture content is still high. As the day warms, this moisture decreases and with it a greater risk of starting a fire. It is also important to ensure that your cutting deck is free from grass as heat from your machine can ignite it. Also do not refuel your mower while the engine is running and/or hot from recent use.

The extension to the Wallaroo Fire Station is about to begin and should be completed very soon. The extension will be an extra bay built on the western side of the shed. We are extending so that we do not have to juggle vehicles and equipment that sit behind each other in and out, thus making it more efficient in our response times.



The new "Prepare. Act. Survive" campaign focuses on highlighting the risk of Bush Fire and the importance of not putting off completing a Bush Fire Survival Plan. Many people don't prepare for bush fires because they don't think they are at risk.

Risk is the possibility of an event causing the loss of or harm to something that is valued. Your perception of risk is influenced by whether you think the event is likely to occur and whether it is likely to cause damage. Bush fires are infrequent and not a part of everyday life and are therefore easily forgotten.

You may not want to acknowledge risk because:

- thinking about bush fire risk makes you feel uncomfortable or anxious
- you don't think it will happen to you
- you think you are adequately prepared
- you may have recently experienced a bush fire and don't think it will happen to you again
- you believe your local brigade can deal with any threat.

It is important that you work closely with your local brigade so you understand that while we will always do what we can to protect life, property and the environment, ultimately your safety is your responsibility. There will never be as many fire trucks as houses and we need to ensure that you understand that your role in preparing is critical to maximise your safety and the protection of your property.

On a lighter note, I would like to extend the best wishes for the Festive Season from the members of the Wallaroo Brigade and hope you have a safe and happy Christmas and New Year.

**REAL
RENDERING
& PAINTING**

transform your home

**PROFESSIONAL AND RELIABLE
WORK AT AFFORDABLE PRICES!**

■ RENDERING	■ COMMERCIAL
■ PAINTING	■ INTERNAL
■ RESIDENTIAL	■ EXTERNAL

■ NO JOB TOO SMALL

Call us now for a free quote!
04 0822 0822
info@realrendering.com.au
www.realrendering.com.au

DAVE CATHIE

property management

- fencing
- weed spraying
- super spreading
- kanga loader/bucket
- 6" & 12" augers
- livestock management
- small mob shearing
- woolclassing

0404 044 285

25 years local experience

davecathie@yahoo.com.au

VILLAGE FAREWELL TRIBUTE

After 25 years in our Village Greg and Julie Welsh are following their lifetime plans and dreams and moving to Tura Beach.

On Saturday 17 November about 50 Hall residents and friends gathered at the community cottage for an afternoon tea celebration to wish Greg and Julie every success as they leave the village to start a new life at the coast. It was a time for reminiscing, happiness and a little sadness as they move away from friends and the familiar Avoca Cottage.

When first arriving in the village Julie quipped that perhaps Hall was not ready for her daughter. However acceptance prevailed when Belinda later married Craig, the boy next door, a fairytale romance. Guests at the afternoon tea presented the couple with a Visitor's Book for their coastal home with the hinted proviso that all present expected to be able to sign the book as guests in the future.

Over the past 25 years Greg, Julie and their children, Belinda and Mark, have been constant and keen contributors to village activities and affairs. Greg has particularly enjoyed being a member of the Hall Men's Shed since its inception.

Everyone at the function wished the couple a healthy, happy future and a fond farewell

Best wishes from the village, Greg and Julie.

Halloween in Hall

Each year the costuming and preparation seems to become more and more elaborate. Innovative residents even costumed their pets. Your reporter was confronted by a ghostly but friendly family dog sporting large devilish ears. Not a bad trick. The "treats" were abundant as family groups moved around our village spreading fun and morbid merriment.

Your devilish reporter,
Bob Richardson



ASBESTOS REMOVAL

Licensed Asbestos Removalist
& Building Maintenance

Phone Gary Reid
(02) 6227 0018
0423 807 747

"A class" licence 2006571 ABN: 83086566976



Hall
Veterinary
Surgery

PROUDLY SERVING THE COMMUNITY
OF HALL VILLAGE AND DISTRICT

www.hallvet.com.au

6230 2223

corner **Victoria & Hoskins** Streets
Hall Village

from the Editor . . .

It is great living in Hall. 2012 has, as usual, seen plenty of events and activity. Regular events like our Sheepdog Trials seem to get better each year. Groups like the Collector's Club, the Friends of the Museum and the Men's Shed, featured on the front page this issue, seem to be gaining momentum while many others, like Rotary, Polocrosse and the Markets are as strong as ever. The Preschool is pretty solid and the Bushrangers seem to be winning games and grants. The Starr's enterprise at Gold Creek Station is attracting all sorts of visitors, the Shearing Shed is expanding and we saved the Post Office. The new Progress Association and Fire Shed Committees seem to be working well. West Texas Crude seems to be more active than ever in its fundraising efforts and new releases.

It's not just the buzz of activity and commitment of its volunteers that makes Hall great. It's the way people keep an eye out for each other and quietly help when someone needs it. Whether someone has died, business is bad or a family member is sick, there seems to be some unspoken rallying of the troops. Sometimes trying to raise money, like the fundraising events for Jim Kroezen's family. Sometimes making sandwiches or scones, or putting on the urn at the Pavilion, like for Elaine Leckie's wake. Other times it might be a phone call or a visit. Providing a meal. A shared cup of tea or glass of wine. Or a quick chat at the shop. Knowing that support and friends are out there is one of the great things about living in Hall. For many of us, 2012 was not the best of years. But if we had to have such a year, what better place to have it in than here. As we celebrate Christmas, let's also celebrate all the fine people and sense of community in and around Hall.

Wishing you all a safe and peaceful season.

Jo Hall



Season's Greetings from the Rural Fringe

Thank you to all our readers and advertisers for supporting the Rural Fringe in 2012.

Wishing you all a very merry Christmas and happy new year from your Fringe Team of volunteers:

Jo (editor),
Bob (sub-editor and roving reporter)
Gail (layout artist)
Andrew (guest layout artist)
Kevin (proof-reader)

Gibley GARDENING

For all your gardening needs

Mowing - small & large scale
Trimming/Hedging/Pruning
including roses & fruit trees
Mulching • Weeding • Fertilising
Soil improvement • Planting
Green waste removal

QUALIFIED HORTICULTURIST

Phone: 0417 682 540 (Charlie)
0428 275 701 (Lisa)

E mail: LKAENEY@DOGTRAPDESIGN.COM.AU

The Rural Fringe – ISSN: 1329-3893

The Rural Fringe is a community newspaper published in 600 copies every second month by the Village of Hall and District Progress Association Inc (VHDPA) and distributed free to mailboxes of the 2618 postcode. It is also available online at www.hall.act.au This publication is funded by the advertisements so readers are encouraged to support the businesses advertised.

Contributions

Everyone is welcome and encouraged to contribute to this publication, particularly local community groups, however it is at the discretion of the Editor as to whether submitted articles are published or not. These deadlines ensure publication by the 10th of every second month.

February issue deadline is 10 January
April issue deadline is 10 March
June issue deadline is 10 May
August issue deadline is 10 July
October issue deadline is 10 September
December issue deadline is 10 November

It is the policy of the VHDPA that articles which are predominantly about the profit making activity of any group or individual can only be accepted for publication if the same issue carrying the article has a paying advertisement of similar size.

Contributions to ruralfringe@hotmail.com or PO Box 43 Hall ACT 2618.

Advertising rates (per issue)

large (quarter page) \$80
medium (eighth page) \$40
small (three sixteenth page) \$30

Other information

Editor: Jo Hall

Sub-editor: Bob Richardson

Enquiries to the Sub-editor on 0407 071 245 or ruralfringe@hotmail.com

The views expressed in this journal do not necessarily reflect those of the Editor, the Sub-editor or the VHDPA.

Some of the material in this journal may be copyright. Please contact the author or the editor for permission before reproducing articles.

HALL PREMIER STORE

& Fine Food Providore

ESTABLISHED 1889

Seasons Greetings!

Hall Premier Store has a fantastic selection of Christmas fare and local wines perfect for sharing the spirit of Christmas.

www.hallpremierstore.com



Find us on
Facebook

www.facebook.com/hallpremierstore

